

Life-Altering Crash Facts



Every 13 hours in our region, someone experiences a life-altering traffic crash.

IN THE KNOXVILLE REGION BETWEEN JANUARY 2016 & JUNE 2019

2,326

traffic crashes resulted in fatality or serious injury



321

of those traffic crashes involved a fatality

2,005

of those traffic crashes involved a serious injury

We've identified a handful of **common factors** in these life-altering traffic crashes. Here are those factors by the numbers. (More than one factor can be involved in a crash.)

 Serious injury crashes
 Fatal crashes



Single-motor-vehicle only

667 124



Senior driver

417 84



DUI

236 96



Teen driver

284 32



Motorcycle-related

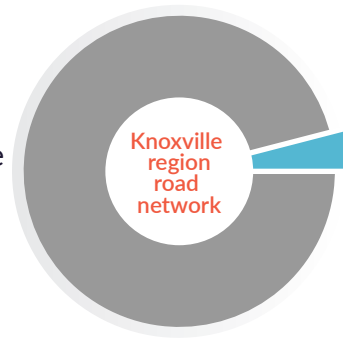
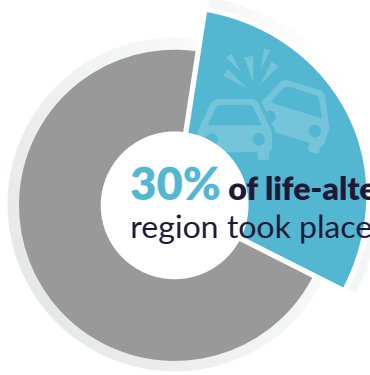
219 41



Pedestrian or bicycle-related

131 51

Time & Locations of Life-Altering Crashes



KNOXVILLE REGION MAJOR ARTERIALS

13 roadways account for **most of these crashes**.

1. W. Broadway in Maryville
2. Chapman Highway
3. Henley Street
4. Broadway in Knoxville
5. Clinton Highway
6. Western Avenue
7. Magnolia Avenue
8. Alcoa Highway
9. Clinch Avenue in Clinton
10. Maryville Highway
11. Charles G. Seivers Blvd.
12. Maynardville Pike
13. Kingston Pike

• Order is most to least crashes per mile

Some of these crash types occur more often on certain days and times of day.

Crashes involving a **suspected DUI** occur most often on **weekends in the late evening and early morning**.

	Midnight 4am	4am 8am	8am noon	noon 4pm	4pm 8pm	8pm midnight
Sunday	16	3	3	5	14	15
Monday	8	1	3	4	7	7
Tuesday	7	4	2	8	9	7
Wednesday	5	5	3	5	17	9
Thursday	5	1	7	10	14	9
Friday	10	1	2	6	13	16
Saturday	18	8	4	8	13	20

Crashes involving a **senior driver (65+)** happen most frequently on **weekday afternoons**.

	Midnight 4am	4am 8am	8am noon	noon 4pm	4pm 8pm	8pm midnight
Sunday	2	0	10	22	9	3
Monday	2	5	23	23	20	4
Tuesday	1	4	29	30	26	3
Wednesday	2	3	21	32	21	4
Thursday	0	6	16	25	22	5
Friday	1	4	18	29	23	3
Saturday	1	0	17	18	12	2

Single-motor-vehicle only crashes (no other vehicles or road users) tend to occur in the **afternoons and evenings**.

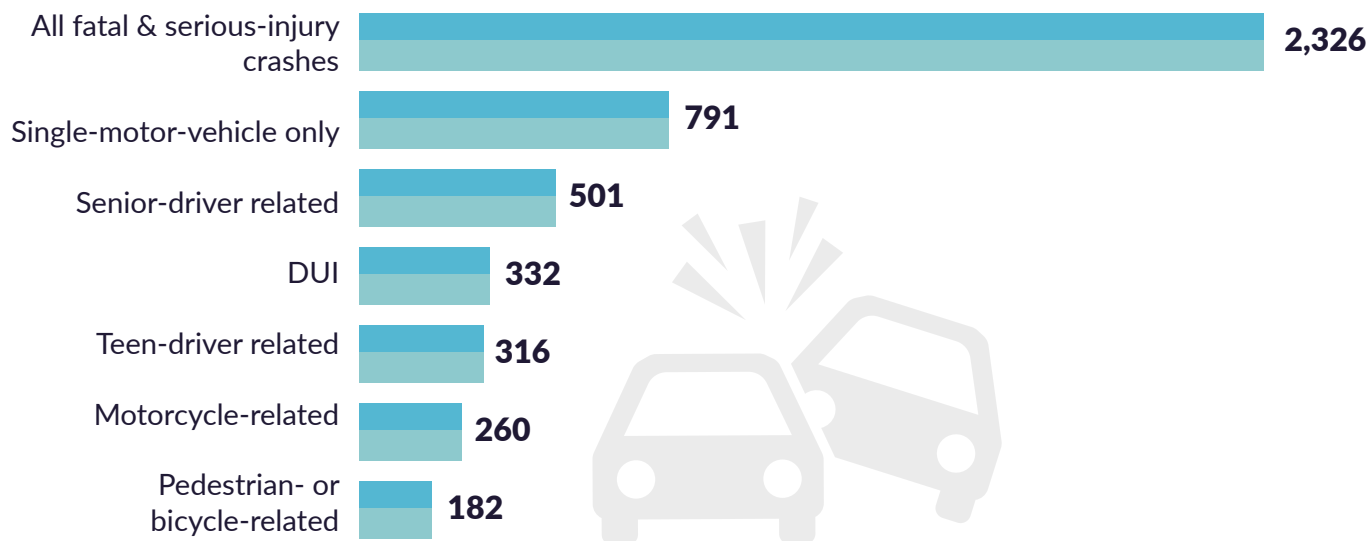
	Midnight 4am	4am 8am	8am noon	noon 4pm	4pm 8pm	8pm midnight
Sunday	31	10	11	20	26	24
Monday	17	10	20	24	20	19
Tuesday	11	10	18	28	20	17
Wednesday	9	16	19	21	31	13
Thursday	12	7	19	22	25	22
Friday	15	9	22	17	26	25
Saturday	31	10	13	24	28	19

Crashes involving a **teen driver** happen most frequently in the **afternoons** and on **Wednesday evenings**.

	Midnight 4am	4am 8am	8am noon	noon 4pm	4pm 8pm	8pm midnight
Sunday	9	3	1	6	6	6
Monday	4	5	11	8	11	8
Tuesday	1	2	3	14	11	6
Wednesday	3	5	3	14	23	7
Thursday	1	4	6	10	9	11
Friday	1	3	9	20	15	11
Saturday	5	5	6	9	13	8

How common factors overlap

We've identified a handful of common factors in life-altering traffic crashes. They are:



In many crashes, multiple factors overlap. Here are some of the most frequent overlaps:

