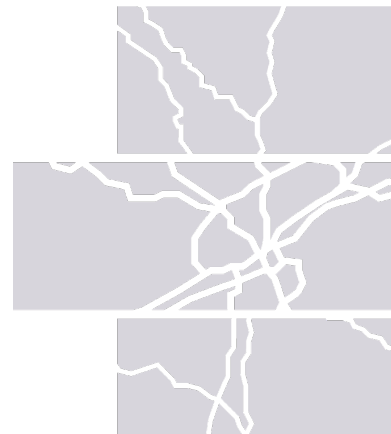




**FY 2023-2026**

**Transportation Improvement Program**

**2045 Mobility Plan  
Project Scoring Format  
& Fiscally Constrained  
Project List**





## G. PROJECT LISTS AND PERFORMANCE

Mobility Plan 2045 outlines the long-term investment plan for improving the transportation system in the Knoxville Regional TPO planning area. This includes the identification of multimodal transportation projects that can be implemented with expected revenues, referred to as the fiscally constrained project list, as well as additional projects for which there is no identified funding source, referred to as the illustrative or unfunded project list. This appendix documents the project application and scoring processes, details of both the fiscally constrained and illustrative projects, the resulting performance of the transportation system using the TPO's regional travel demand model, and the alignment of the fiscally constrained projects with federal performance measures.

### PROJECT APPLICATION AND SCORING

The list of candidate projects was developed through multiple interactions with the public, stakeholders, and the TPO's member jurisdictions. Based on future growth projections, technical analysis of transportation facility operation, and input from the first round of public input, the TPO initiated conversations with its member jurisdictions about project needs in the region. These discussions were followed by a formal call for projects in which counties, cities, and TDOT were able to submit candidate projects for consideration in the Mobility Plan. This project application process was conducted with multiple processes (with materials documented in Appendix F) to allow entities to more efficiently submit updated information for previous Mobility Plan projects and new information for projects not yet included in a Mobility Plan. In total, there were 154 project applications submitted.

Following the curation of the candidate project list, each project was scored against the TPO's regional mobility goals, shown in Table G-1. This table also shown the alignment of each goal with the data-driven criteria used to score each project as well as the maximum points associated with each. In addition to aligning with Mobility Plan goals, projects were given an additional five points if they were locally supported or endorsed. The distribution of project scores ranged from 23 -79 and was used to inform the selection of fiscally constrained projects in tandem with financial projections and funding program eligibility.

Table G-1. Project Scoring Mechanism

GOAL	TOTAL POINTS (CR)	TOTAL POINTS (WC)	PURPOSE	SCORING CRITERIA	MAX. POINT ALLOCATION (CR)	MAX. POINT ALLOCATION (WC)
MAINTENANCE AND SYSTEM PRESERVATION	19	19	This criteria prioritizes projects that minimize future maintenance needs. The smaller the footprint of the project, the more points it receives.	Maintenance, Intersection, Minor Reconstruction, Transit Vehicle Replacement, Operations/ITS, Multimodal	13	13
				Center Turn Lane Only	11	11
				Additional Through Lanes / Transit Fleet/Service Expansion	6	6
				New Road Extension	3	3
			This criteria prioritizes projects that improve a higher-order facility based on functional classification.	Interstate/Expressway	6	6
				Principal Arterial	5	5
				Minor Arterial	4	4
				Major Collector	3	3
				Minor Collector	2	2
				Local	1	1
MORE OPTIONS	17	18	This criteria prioritizes any project where multimodal facilities are included, with more priority given to accommodations in areas with a higher degree of user potential.	High-quality facility within existing center/high density area (sidewalk >5 feet, buffered sidewalk, buffered or protected on-street bike facility, or an off-street multi-use path or greenway)	12	12
				Low-quality facility within existing center/high density area (sidewalks <=5 feet, standard bike lane, wide shoulders, or shared routes/sharrows)	8	8
				High-quality facility outside existing center/high density area (sidewalk >5 feet, buffered sidewalk, buffered or protected on-street bike facility, or an off-street multi-use path or greenway)	6	6
				Low-quality facility outside existing center/high density area (sidewalks <=5 feet, standard bike lane, wide shoulders, or shared routes/sharrows)	4	4
			This criteria prioritizes projects that do not negatively impact bicyclists and pedestrians.	Project includes widening/increasing crossing distances	5	6
SAFETY AND SECURITY	13	16	This criteria prioritizes projects that improve facilities with known safety issues for drivers, pedestrians, and bicyclists.	Crash Severity Index	6	8
			This criteria prioritizes projects that include multiple elements with known safety benefits.	2 or more safety elements	5	6
				Less than 2 safety elements	2	2
			This criteria prioritizes projects that create redundancy through physical or technological infrastructure.	Project improves parallel route	1	1
				Traffic operations/ITS improvements/Transit Agency Safety Plan projects	1	1

GOAL	TOTAL POINTS (CR)	TOTAL POINTS (WC)	PURPOSE	SCORING CRITERIA	MAX. POINT ALLOCATION (CR)	MAX. POINT ALLOCATION (WC)
HEALTH AND ENVIRONMENT	10	13	This criteria prioritizes projects that improve connectivity of bicycle, pedestrian, or transit facilities, thereby potentially reducing auto-dependency.	Project improves multimodal connectivity by addressing gaps	3	4
			This criteria prioritizes projects that include strategies aimed at reducing VMT.	Travel Demand Management programs	2	2
				Alternative mode accommodations	1	2
				Traffic operations/ITS improvements	2	2
			This criteria prioritizes projects that have identified sustainable ways of mitigating stormwater runoff.	Project specifically calls out permeable pavement, bioretention landscaping elements, etc.	2	3
EQUITABLE ACCESS	9	13	This criteria prioritizes projects that provide access to multiple community resources in high priority areas.	Employment density within existing centers	3	4
				Recreational opportunities	2	3
				Healthcare facilities	2	3
				Schools	2	3
CONGESTION REDUCTION	12	8	This criteria prioritizes projects located on routes with existing and future congestion issues.	Deterioration in v/c ratio between 2018 and 2045 E+C	4	3
				Congestion segment based on 2045 E+C model run (v/c ratio >0.85)	1	1
				Existing Level of Travel Time Reliability	4	3
			This criteria prioritizes projects that improve congestion without widening.	Non-SOV strategy that was identified through CMP	2	0
			Improves transit service / provides bike/ped facilities to provide alternatives	1	1	
PRESERVATION OF PLACE	11	9	This criteria prioritizes projects that promote smart and preferred growth concepts.	Project is located in a high-density area/existing center	6	6
			This criteria prioritizes projects that do not impact natural or cultural resources.	Project does not impact parks	2	1
				Project does not impact historic areas	2	1
				Project does not impact floodplains	1	1
ECONOMY AND FREIGHT	9	4	This criteria prioritizes projects that improve access to freight facilities, tourist destinations, and employment centers.	Enhances direct connection to major freight facilities	1	0
				Improves connection to regional tourist destination	1	2
				Employment density within 1 mile of project	4	2
			This criteria prioritizes projects that are located on and/or improve a major freight corridor.	Project reduces delay on PHFN	1	0
			Percent of trucks	2	0	
LOCAL SUPPORT	±5	±5	This criteria prioritizes projects that are consistent with local plans and/or locally supported/endorsed.	Project is included in local plan or endorsed locally	5	5

# PROJECT LISTS

The following pages organize the fiscally constrained projects by county with a map and then a detailed project table. The illustrative projects for the region are included in a single map and table at the conclusion of this section. In addition, all projects can be viewed in an online map at the following website: <https://maps.knoxmpc.org/app/mobility>. In the tables that follow, project details are provided as follows:

- ▶ **KRMP ID** – The Knoxville Regional Mobility Plan ID number is a unique ID to help track projects over the course of Mobility Plan updates and through other TPO processes (e.g., the Transportation Improvement Program). The first two digits represent the year in which the project was first included in a Mobility Plan, and the following three digits indicate the county in which the project is located as follows:
  - 100's – Anderson County/Oak Ridge
  - 200's – Blount County
  - 400's – Loudon County
  - 500's – Sevier County
  - 600's – Knox County
  - 800's and above – indicate an ITS or non-roadway project
- ▶ **Project Name** – Lists the primary project facility involved and possibly a short description of the type of work.
- ▶ **Agency** – Lists the implementing agency, typically the municipal or county government where the project is located or TDOT.
- ▶ **Facility Name** – Lists the facility name on which the project is located.
- ▶ **From** – Lists the approximate beginning termini of the project, typically a major roadway facility or intersection.
- ▶ **To** – Lists the approximate ending termini of the project, typically a major roadway facility or intersection.
- ▶ **Length** – The length of the project in number of miles where applicable. Note that a listing of “N/A” in this column could either mean “not applicable” such as the case of a planning study or “not available” such as the case of a spot intersection or interchange reconstruction project in which the exact roadway segment length affected cannot usually be determined at this stage of project development.

► **Description** – Lists the major scope of work that is being proposed. Further explanation of some of the primary generalized descriptions included in the roadway project list are as follows:

- Construct New Roadway (any number of lanes) – Entails constructing a roadway on a new location. Roadways that are envisioned to include full access control are denoted as a “freeway.” The final design will determine the median configuration in terms of either a continuous center turn lane or non-traversable raised median and the accommodation of bicyclists and pedestrians.
- Widen Roadway (from x lanes to y lanes) – Entails addition of motor vehicle capacity through construction of additional through travel lanes on an existing roadway. Multilane facilities will generally include either a non-traversable median or a center turn lane. The final design will determine the median configuration and accommodation of bicyclists and pedestrians through sidewalks and/or bike lanes.
- Reconstruct two-lane road – Entails the improvement of an existing two-lane roadway to bring it up to modern standards in terms of lane and shoulder widths and geometric design chiefly to enhance the safety of the roadway. This may also involve the construction of turn lanes at major intersections necessary for safety to remove stopped vehicles from the travel lanes. The final design will determine the median configuration and accommodation of bicyclists and pedestrians through sidewalks and/or bike lanes.
- Add Center Turn Lane – Entails addition of a continuous two-way left turn lane on an existing undivided roadway of two or more lanes, also usually involves reconstructing the roadway to modern design standards for lane and shoulder width and geometric design. The final design will determine the median configuration and accommodation of bicyclists and pedestrians through sidewalks and/or bike lanes.
- Replace Bridge – Entails the replacement of an existing bridge that has been determined to be structurally deficient. The new bridge may include safety enhancements such as wider lanes and shoulders but will not have more through lanes than the previous structure had unless otherwise noted.
- Intersection Improvements – Entails the modification of a single intersection to improve safety and operations including the possible addition of separate turn lanes, realignment of approaches or traffic signal.

- ▶ **Horizon Year** – Lists the anticipated timeframe for project completion between now and the future horizon year of 2045. In the funding analysis, the TPO looks at project implementation in five-year timeframes spanning the entire planning horizon, or 2021 – 2045. When summarizing this information for the Mobility Plan, projects are grouped into three distinct horizons covering 2021 – 2026, 2027 – 2035, and 2036 – 2045. More specifically, projects with a horizon year of 2026 are expected to be completed between January 2021 and December of 2026. Similarly, projects with a horizon year of 2035 are expected to be completed between January 2027 and December of 2035, and projects with a horizon year of 2045 are expected to be completed between January 2036 and December of 2045.
- ▶ **Horizon Year Cost** – This is the projected total cost of all phases of the project including both federal (if applicable) and state/local matching funds. This cost has been inflated to the horizon year of implementation. The horizon year cost is derived by taking the current year estimated cost and applying an inflation factor for the number of years until anticipated project implementation.
- ▶ **Proposed Funding Source** - In order to determine fiscal constraint of the Mobility Plan, the TPO must assign a proposed funding source to each project to ensure that total costs would be less than or equal to total revenues. TPO staff proposes funding sources based on the project type and the eligibility restrictions of certain funding categories. More details on the different funding categories can be found in Appendix E.
- ▶ **Performance Measures (PM) Impact** - As documented in Chapter 2 of the Mobility Plan, federal regulations require that the TPO coordinate with TDOT and the region’s transit agencies to develop and maintain performance measures and targets related to safety (PM1), pavement and bridge conditions (PM2), congestion reduction and air quality (PM3), and transit asset conditions (PM4). The TPO’s Executive Board has agreed to support the state’s performance targets in these areas, meaning that the TPO agrees to plan and program projects that contribute to the accomplishment of those performance targets. This column highlights the Mobility Plan 2045 projects that will improve overall performance of the system in the Knoxville region and help the state achieve its targets in these four performance areas. While some federal measures are applicable to a limited set of roadways – PM2 and PM3 measures are principally focused on the Interstate and NHS systems – the assessment of project PM contributions is applied regardless of roadway type and strict PM applicability. This affirms a system-wide approach to transportation performance management.



- **PM1** – Safety contributions are expected for projects that bring an existing facility up to modern standards by addressing geometric and design deficiencies. Intersection projects often address safety concerns with the construction of turn lanes, reducing conflict points. Bicycle and pedestrian projects address safety considerations for these vulnerable users of the transportation network.
- **PM2** – Roadway reconstruction and bridge replacement projects are primary contributors to pavement and bridge condition metrics. Many road widening projects also involve resurfacing of the existing facility, providing system condition benefits.
- **PM3** – Congestion reduction is expected for new road construction, roadway widening with added lanes, Traffic Management and Intelligent Transportation Systems implementation, and intersection projects to address capacity concerns.
- **PM4** – Transit capital projects are the major drivers of this metric.

Figure G-1. Fiscally Constrained Projects in Anderson County

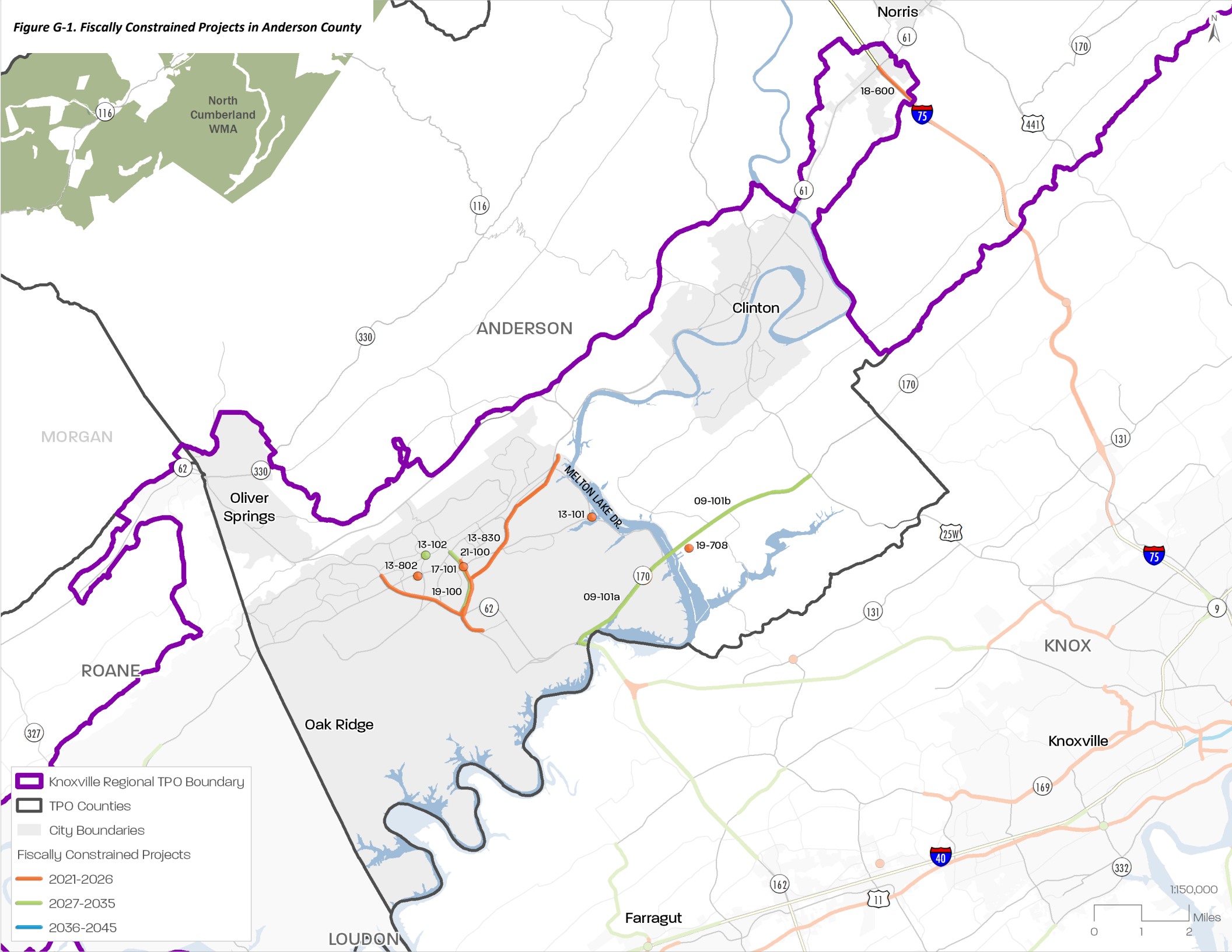


Table G-2. Fiscally Constrained Projects in Anderson County

KRMP ID	PROJECT NAME	AGENCY	FACILITY NAME	FROM	TO	LENGTH (MILES)	DESCRIPTION	HORIZON YEAR	HORIZON YEAR COST	PROPOSED FUNDING SOURCE	PM IMPACT
CITY OF OAK RIDGE											
13-101	Emory Valley Road at Melton Lake Drive Roundabout	Oak Ridge	Emory Valley Road at Melton Lake Dr Intersection	Intersection		-	Construct roundabout	2026	\$1,079,155	HSIP	1
13-102	Tulane Avenue at Pennsylvania Avenue Roundabout Construction	Oak Ridge	Tulane Ave at Pennsylvania Ave	Intersection		-	Construct roundabout	2030	\$1,269,361	HSIP	1
13-802	Oak Ridge Signal Timing Optimization Program: Ph 2	Oak Ridge		Illinois Ave	Florida Ave	2.85	Continues implementation of Advanced Traffic Management Systems (ATMS) which are a component of Intelligent Transportation Systems (ITS) that integrate various technologies specifically related to the traffic signal system to improve overall operations. This project primarily covers the Oak Ridge Turnpike	2026	\$3,147,516	CMAQ	3
13-830	Oak Ridge Rails to Trails	Oak Ridge	Abandoned rail line	Melton Lake Rd/Greenway	Scarboro Rd	4.50	Rails to Trails project on abandoned rails from Elza Gate Park at the Oak Ridge Turnpike to the Y-12 National Security Complex on Scarboro Road, and along Belgrade Road, Warehouse Road, Fairbanks Road, and Lafayette Drive.	2026	\$4,073,508	L-STBG	1
17-101	Emory Valley Road at Lafayette Drive Intersection	Oak Ridge	Emory Valley Road at Lafayette Drive Intersection	Intersection		-	Remove dedicated right turn lane from Emory Valley (west) to Lafayette Drive (north) with standard right turn lane.	2026	\$485,013	HSIP	1
19-100	Oak Ridge Signal Timing Optimization Program: Ph 3	Oak Ridge	(11) signalized intersections along Illinois Ave (SR 62) and Lafayette Drive	Various		3.44	Continues implementation of City's Advanced Traffic Management Systems (ATMS) which are a component of Intelligent Transportation Systems (ITS) that integrate various technologies specifically related to the traffic signal system to improve overall operations. This project primarily covers Illinois Ave and Lafayette Dr	2026	\$3,257,305	CMAQ	3
19-708	TVA Bull Run Site Study	Oak Ridge	TVA Bull Run Site on SR 170			N/A	Study to evaluate the redevelopment opportunities and transportation impacts of the TVA Bull Run Fossil Plant facility following its closure by the end of 2023	2026	\$68,894	L-STBG	-
21-100	Lafayette Drive Bicycle and Pedestrian Safety Improvements	Oak Ridge	Lafayette Drive	From S Illinois (SR 62)	Oak Ridge Turnpike (SR 95)	1.50	Widen Lafayette Dr to add bicycle lanes on both sides between S. Illinois (SR 62) and Oak Ridge Turnpike (SR 95), construct 1.5 miles of sidewalk with curb along the entire west side of the street, and add one new crosswalk at the Manchester/Hendrix intersection to provide direct connection to the Rails to Trails greenway	2030	\$1,750,396	L-STBG-TA	1

KRMP ID	PROJECT NAME	AGENCY	FACILITY NAME	FROM	TO	LENGTH (MILES)	DESCRIPTION	HORIZON YEAR	HORIZON YEAR COST	PROPOSED FUNDING SOURCE	PM IMPACT
ANDERSON COUNTY											
09-101A	Edgemoor Road (SR 170) – Ph 1	TDOT	Edgemoor Rd (SR 170)	Oak Ridge Hwy (SR 62)	Melton Lake Dr	2.60	Widen from 2-lanes to 4-lanes with median and/or center turn lane. Also includes bicycle/pedestrian facilities and a new bridge over the Clinch River.	2030	\$71,442,093	IA	1,2,3
09-101B	Edgemoor Road (SR 170) - Ph 2	TDOT	Edgemoor Rd (SR 170)	Melton Lake Dr	Clinton Hwy (US 25W/SR 9)	3.60	Widen from 2-lanes to 4-lanes with median and/or center turn lane. Also includes bicycle/pedestrian facilities and a new bridge over the Clinch River.	2030	\$91,539,234	IA	1,2,3

**Figure G-2. Fiscally Constrained Projects in Blount County**

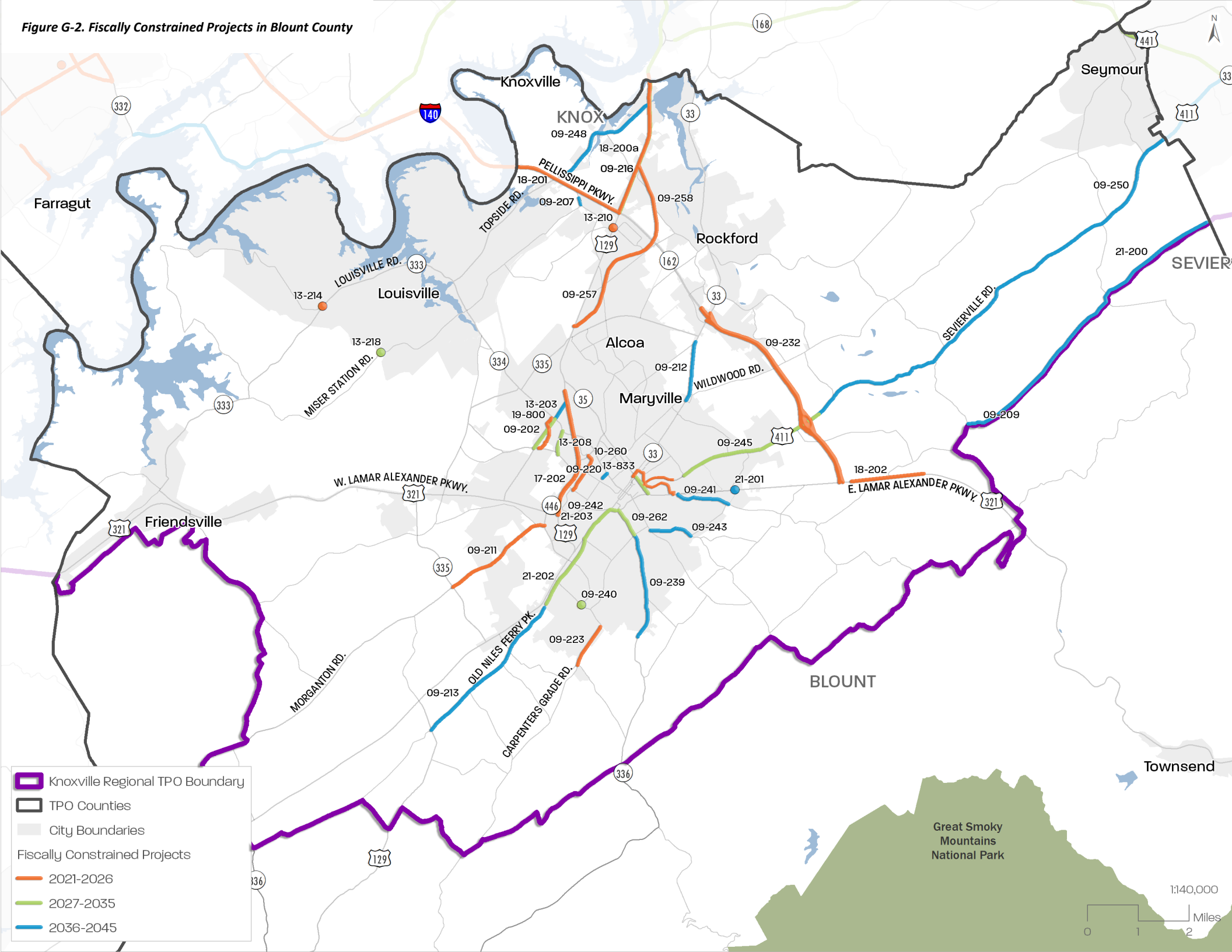


Table G-3. Fiscally Constrained Projects in Blount County

KRMP ID	PROJECT NAME	AGENCY	FACILITY NAME	FROM	TO	LENGTH (MILES)	DESCRIPTION	HORIZON YEAR	HORIZON YEAR COST	PROPOSED FUNDING SOURCE	PM IMPACT
CITY OF ALCOA											
09-202	Robert C Jackson Drive Extension - Ph I	Alcoa	Robert C. Jackson Dr	Middlesettlements Rd	Louisville Rd (SR 334)	0.70	Construct new 4-lane roadway	2030	\$17,185,013	L-STBG	3
09-207	Wrights Ferry Road Center Turn Lane Improvements	Alcoa	Wrights Ferry Road	Airbase Rd	Topside Rd	1.40	Reconstruct 2-lane road with addition of continuous center turn lane and bicycle/pedestrian facilities	2045	\$24,380,779	L-STBG	1,2
09-220	Home Avenue Extension	Alcoa	Home Ave	McCammon Ave	Calderwood St	0.20	Construct new 2-lane road with center turn lane to extend Home Ave through existing shopping center to Calderwood St	2045	\$11,546,153	L-STBG	3
09-248	Topside Road (SR 333) Improvements	Alcoa	Topside Rd (SR 333)	Wrights Ferry Rd	Alcoa Hwy (SR 115/US 129)	1.30	Reconstruct 2-lane road with addition of continuous center turn lane and bicycle/pedestrian facilities	2045	\$9,748,760	S-STBG	1,2
13-203	Robert C Jackson Drive Extension - Ph 2	Alcoa	Robert C. Jackson Dr	Louisville Rd (SR 334)	US 129 Bypass (SR 115)	0.50	Construct new 4-lane roadway and grade separated interchange connecting US 129 and Associates Boulevard	2040	\$47,910,322	L-STBG	3
13-208	Harvest Lane Extension	Alcoa	Harvest Ln	Existing Harvest Ln terminus	Louisville Rd (SR 334)	0.20	Construct new 2-lane road with sidewalks	2030	\$2,393,802	L-STBG	3
13-210	North Park Boulevard & Airbase Road Safety Improvements	Alcoa	Intersection of North Park Blvd/Airbase Rd at Alcoa Hwy (US 129/SR 115)	Intersection		0.30	Realign North Park Boulevard to Airbase Road	2026	\$8,401,024	HSIP	1
CITY OF MARYVILLE											
09-214	Sevierville Road (SR 35/US 411) Widening	Maryville	Sevierville Rd (SR 35/US 411)	Washington St (SR 35)	Walnut St	0.58	Reconstruct from two lanes to three lanes, curb and gutter, and sidewalks with intersection improvements.	2026	\$14,660,629	L-STBG	1,2
09-216	Alcoa Highway (SR 115/US 129) Widening	TDOT	Alcoa Hwy (SR 115/US 129)	Pellissippi Pkwy (SR 162)	south of Little River	2.71	Reconstruct SR 115 from 4-lanes to 6-lanes, including a frontage road system with two new interchanges at Singleton Station Road and Topside Road (SR 333), modify the existing SR 115 and SR 162 interchange, and construct a multi-use path.	2030	\$138,929,588	IA	1,2,3
09-223	Carpenters Grade Road Reconstruction and Intersection Improvements	Maryville	Carpenters Grade Rd	Raulston Rd	Cochran Rd	0.89	Reconstruct 2-lane road with addition of turn lanes and sidewalk. Construct a signalized intersection at Peterson Ln, Cochran Rd and Raulston Rd intersection.	2026	\$3,761,000	L-STBG	1,2,3

KRMP ID	PROJECT NAME	AGENCY	FACILITY NAME	FROM	TO	LENGTH (MILES)	DESCRIPTION	HORIZON YEAR	HORIZON YEAR COST	PROPOSED FUNDING SOURCE	PM IMPACT
CITY OF MARYVILLE (CONT.)											
09-232	Pellissippi Parkway (SR 162) Extension	TDOT	Pellissippi Pkwy (SR 162)	Old Knoxville Hwy (SR 33)	Lamar Alexander Pkwy (US 321/SR 73)	4.40	Construct new 4-lane highway	2026	\$92,924,138	IA	3
09-239	Montvale Road (SR 336) Widening	Maryville	Montvale Road (SR 336)	Montvale Station Rd	Maryville South City Limits (Southview Dr)	2.40	Reconstruct 2-lane road with addition of continuous center turn lane and bicycle/pedestrian facilities	2040	\$16,776,845	S-STBG	1,2
09-240	Sandy Springs Road at Montgomery Lane Intersection Improvements	Maryville	Sandy Springs Rd at Montgomery Ln	Intersection		-	Intersection improvements including turn lanes and new traffic signal	2030	\$1,495,108	HSIP	1
09-241	Tuckaleechee Pike Reconstruction	Maryville	Tuckaleechee Pk	US 321	Grandview Dr	1.10	Reconstruct 2-lane road with addition of turn lanes and sidewalk	2045	\$11,965,999	L-STBG	1,2
09-242	W Broadway Avenue (SR 33/US 411) Improvements	Maryville	W Broadway Ave (SR 33/US 411)	S Cedar St	US 321	0.50	Construct additional westbound left turn lane at intersection with Lamar Alexander Pkwy and convert continuous center turn lane to additional westbound through lane along W Broadway Avenue. Project includes construction of new shared use path and other bicycle/pedestrian enhancements	2030	\$6,754,584	L-STBG	1
09-243	Wilkinson Pike Widening	Maryville	Wilkinson Pike	Court Street	Maryville City Limits (Grandview Dr)	0.90	Reconstruct 2-lane road with addition of turn lanes and sidewalk	2040	\$7,101,797	L-STBG	1,2
09-245	Sevierville Road (SR 35/US 411) Widening	Maryville	Sevierville Rd (SR 35/US 411)	Everett High Rd	Maryville City Limits (Nina Delozier Rd)	2.00	Reconstruct 2-lane road with addition of continuous center turn lane and bicycle/pedestrian facilities	2035	\$29,398,113	NHPP	1,2
09-257 09-258	Relocated Alcoa Highway (SR 115/US 129)	TDOT	Relocated Alcoa Hwy (SR 115/US 129)	Proposed Interchange at Tyson Blvd	Existing SR-115 at S. Singleton Station Rd	4.90	Construct new 4-lane divided highway with auxiliary lanes and new interchanges at McGhee Tyson Airport access, Wright Rd, Pellissippi Pkwy (SR-162) and Singleton Station Rd	2026	\$185,000,000	NHPP	1,3



KRMP ID	PROJECT NAME	AGENCY	FACILITY NAME	FROM	TO	LENGTH (MILES)	DESCRIPTION	HORIZON YEAR	HORIZON YEAR COST	PROPOSED FUNDING SOURCE	PM IMPACT
CITY OF MARYVILLE (CONT.)											
09-262	Montvale Road (SR 336) Widening	TDOT	Montvale Road (SR 336)	Montvale Station Rd	US 321	0.60	Widen existing roadway to 2 - 12 foot travel lanes with a 12 foot center turn lane including curb and gutter, sidewalk and a multiuse path. Close SR-73 EB and WB access to Highland Ave. to construct EB right-turn lane near Highland Ave.	2030	\$31,896,107	IA	1,2
10-260	Foothills Mall Drive Extension - Ph 2	Maryville	Foothills Mall Drive	Foch Street	McCammon Ave	0.70	Construct new 2-lane road with center turn lane and sidewalks	2026	\$4,723,831	L-STBG	1,3
13-833	Maryville to Townsend Greenway - Ph 1 (Brown Creek)	Maryville	Maryville/Alcoa Greenway Trail System	Harper Ave Trailhead	US 321	1.20	Construct a new shared use path between the existing Maryville/Alcoa Greenway at Aluminum Avenue to Lamar Alexander Pkwy along Brown Creek	2026	\$1,806,269	L-STBG	1
17-202	US 129 Widening	TDOT	US 129 (SR 115)	Hall Rd (SR 35)	US 321	2.90	Widen from 4 to 6 lanes	2026	\$25,022,277	IA	2,3
18-200A	Alcoa Highway (SR 115/US 129) ITS Expansion - Ph 1	TDOT		I-140	Topside Rd	2.20	ITS Smartway Geographic Expansion	2026	\$680,672	NHPP	3
21-201	Intersection Improvements on US 321 Realign Amerine Road and Grandview Drive	Maryville				-	(Intersection improvements on Lamar Alexander Pkwy (SR 73/US 321) near Grandview Drive and Amerine Road/Janet Lane to include realignment and signalization)	2040	\$10,046,015	L-STBG	1
21-202	Old Niles Ferry Road Widening	Maryville	Old Niles Ferry Road	Savannah Park Drive	W. Broadway Avenue	1.50	Widen existing 2-lane roadway to include curb, gutter, and sidewalk on both sides	2030	\$6,476,530	L-STBG	1,2
21-203	W. Broadway Avenue (SR 33) Improvements from Old Niles Ferry Road to S. Cedar Street	Maryville	W. Broadway Avenue (S.R. 33 / U.S. 411)	Old Niles Ferry Road	S. Cedar Street	0.50	Widen existing 2-lane roadway to include concrete curb, gutter, and sidewalk on both sides of the roadway and installation of auxiliary turning lanes where needed. Modification of an existing traffic signal at Magnolia Ave. Realignment and geometric improvements at the intersection of Old Niles Ferry Rd, which will include Best St)	2035	\$5,947,970	L-STBG	1,2
21-204	Washington Street Improvements from E. Broadway Avenue to US 321	Maryville	Washington Street (S.R. 447)	E. Broadway Avenue (S.R. 33)	E. Lamar Alexander Parkway (U.S. 321/S.R. 73)	0.40	Reconstruction of the existing 5-lane roadway to contain standard width lanes, curb, gutter, and sidewalk, along with a pedestrian buffer along both sides of the roadway	2035	\$14,488,645	L-STBG	1,2



KRMP ID	PROJECT NAME	AGENCY	FACILITY NAME	FROM	TO	LENGTH (MILES)	DESCRIPTION	HORIZON YEAR	HORIZON YEAR COST	PROPOSED FUNDING SOURCE	PM IMPACT
BLOUNT COUNTY											
09-209	Ellejoy Road Reconstruction	Blount County	Ellejoy Road	Tuckaleechee Pike	Jeffries Hollow Road	3.70	Reconstruct 2-lane road with addition of turn lanes	2040	\$20,370,866	L-STBG	1,2
09-211	Morganton Road Reconstruction - Ph 1	Blount County	Morganton Rd	William Blount Dr (SR 335)	Foothills Mall Dr	2.30	Reconstruct 2-lane road with addition of continuous center turn lane and bicycle/pedestrian facilities	2026	\$8,439,940	L-STBG	1,2
09-212	Old Knoxville Highway (SR 33) Reconstruction	Blount County	Old Knoxville Hwy (SR 33)	Wildwood Rd	E. Hunt Rd (SR 335)	1.30	Reconstruct 2-lane road with addition of turn lanes	2040	\$11,241,042	S-STBG	1,2
09-213	Old Niles Ferry Road Reconstruction	Blount County	Old Niles Ferry Rd	Calderwood Hwy (SR 115)	Maryville City Limits	3.30	Reconstruct 2-lane road with addition of turn lanes	2040	\$19,519,138	L-STBG	1,2
09-250	Sevierville Road (SR 35/US 411) Reconstruction	Blount County	Old Knoxville Hwy (SR 33)	Swanee Dr (Maryville City Limits)	Chapman Hwy (US 441/SR 71)	11.90	Reconstruct 2-lane road with addition of turn lanes	2045	\$78,285,495	S-STBG	1,2
13-214	Old Lowes Ferry Road at Louisville Road (SR 333) Intersection Improvements	Blount County	Intersection of Old Lowes Ferry Rd at Louisville Rd (SR 333)	Intersection		-	Realign intersection and add turn lanes	2026	\$696,588	HSIP	1
13-218	Middlesettlements Road at Miser Station Road Intersection Improvements	Blount County	Intersection of Middlesettlements Rd at Miser Station Rd	Intersection		-	Realign intersection and add turn lanes	2035	\$899,412	HSIP	1
18-202	Blount County Greenway Trail - Ph 1	Blount County		US 321 at NW corner of Helton Rd	Perry's Mill Parking Area	3.30	Greenway trail contained completely within US Highway 321 right-of-way from Heritage High School to Perry's Mill Parking area. It will also include additional bike access link to Old Walland Highway across Melrose Station Bridge.	2026	\$4,310,136	L-STBG-TA	1
19-800	Denso Greenway Trail Extension	Blount County		Atchley Dr.	Louisville Rd.	0.70	Construction of multi-modal greenway - Project includes a pedestrian bridge, ADA upgrades and pedestrian lighting	2026	\$1,126,065	S-STBG-TA	1
21-200	Jeffries Hollow Road	Blount County	Jeffries Hollow Road	Ellejoy Road	Sevier County Line	2.80	Reconstruct 2-lane roadway with addition of turn lanes	2045	\$25,954,490	L-STBG	2

**Figure G-3. Fiscally Constrained Projects in Knoxville County**

This map displays the Knoxville Regional Transportation Planning Organization (TPO) boundary and the locations of fiscally constrained projects across Knoxville County. The projects are categorized by their fiscal year ranges: 2021-2026 (orange), 2027-2035 (green), and 2036-2045 (blue). The map includes major highways, city boundaries, and project locations marked with colored dots and labels. An inset map provides a detailed view of the downtown area.

**Legend:**

- Knoxville Regional TPO Boundary (Purple outline)
- TPO Counties (Black outline)
- City Boundaries (Gray fill)
- Fiscally Constrained Projects
  - 2021-2026 (Orange line)
  - 2027-2035 (Green line)
  - 2036-2045 (Blue line)

**Key Features:**

- Major Highways:** I-75, I-40, I-640, US-11, US-25W, US-411, US-129, US-158, US-168, US-170, US-177, US-190, US-223, US-259, US-321, US-332, US-338, US-339, US-340, US-341, US-342, US-343, US-344, US-345, US-346, US-347, US-348, US-349, US-350, US-351, US-352, US-353, US-354, US-355, US-356, US-357, US-358, US-359, US-360, US-361, US-362, US-363, US-364, US-365, US-366, US-367, US-368, US-369, US-370, US-371, US-372, US-373, US-374, US-375, US-376, US-377, US-378, US-379, US-380, US-381, US-382, US-383, US-384, US-385, US-386, US-387, US-388, US-389, US-390, US-391, US-392, US-393, US-394, US-395, US-396, US-397, US-398, US-399, US-400, US-401, US-402, US-403, US-404, US-405, US-406, US-407, US-408, US-409, US-410, US-411, US-412, US-413, US-414, US-415, US-416, US-417, US-418, US-419, US-420, US-421, US-422, US-423, US-424, US-425, US-426, US-427, US-428, US-429, US-430, US-431, US-432, US-433, US-434, US-435, US-436, US-437, US-438, US-439, US-440, US-441, US-442, US-443, US-444, US-445, US-446, US-447, US-448, US-449, US-450, US-451, US-452, US-453, US-454, US-455, US-456, US-457, US-458, US-459, US-460, US-461, US-462, US-463, US-464, US-465, US-466, US-467, US-468, US-469, US-470, US-471, US-472, US-473, US-474, US-475, US-476, US-477, US-478, US-479, US-480, US-481, US-482, US-483, US-484, US-485, US-486, US-487, US-488, US-489, US-490, US-491, US-492, US-493, US-494, US-495, US-496, US-497, US-498, US-499, US-500, US-501, US-502, US-503, US-504, US-505, US-506, US-507, US-508, US-509, US-510, US-511, US-512, US-513, US-514, US-515, US-516, US-517, US-518, US-519, US-520, US-521, US-522, US-523, US-524, US-525, US-526, US-527, US-528, US-529, US-530, US-531, US-532, US-533, US-534, US-535, US-536, US-537, US-538, US-539, US-540, US-541, US-542, US-543, US-544, US-545, US-546, US-547, US-548, US-549, US-550, US-551, US-552, US-553, US-554, US-555, US-556, US-557, US-558, US-559, US-560, US-561, US-562, US-563, US-564, US-565, US-566, US-567, US-568, US-569, US-570, US-571, US-572, US-573, US-574, US-575, US-576, US-577, US-578, US-579, US-580, US-581, US-582, US-583, US-584, US-585, US-586, US-587, US-588, US-589, US-590, US-591, US-592, US-593, US-594, US-595, US-596, US-597, US-598, US-599, US-600, US-601, US-602, US-603, US-604, US-605, US-606, US-607, US-608, US-609, US-610, US-611, US-612, US-613, US-614, US-615, US-616, US-617, US-618, US-619, US-620, US-621, US-622, US-623, US-624, US-625, US-626, US-627, US-628, US-629, US-630, US-631, US-632, US-633, US-634, US-635, US-636, US-637, US-638, US-639, US-640, US-641, US-642, US-643, US-644, US-645, US-646, US-647, US-648, US-649, US-650, US-651, US-652, US-653, US-654, US-655, US-656, US-657, US-658, US-659, US-660, US-661, US-662, US-663, US-664, US-665, US-666, US-667, US-668, US-669, US-670, US-671, US-672, US-673, US-674, US-675, US-676, US-677, US-678, US-679, US-680, US-681, US-682, US-683, US-684, US-685, US-686, US-687, US-688, US-689, US-690, US-691, US-692, US-693, US-694, US-695, US-696, US-697, US-698, US-699, US-700, US-701, US-702, US-703, US-704, US-705, US-706, US-707, US-708, US-709, US-710, US-711, US-712, US-713, US-714, US-715, US-716, US-717, US-718, US-719, US-720, US-721, US-722, US-723, US-724, US-725, US-726, US-727, US-728, US-729, US-730, US-731, US-732, US-733, US-734, US-735, US-736, US-737, US-738, US-739, US-740, US-741, US-742, US-743, US-744, US-745, US-746, US-747, US-748, US-749, US-750, US-751, US-752, US-753, US-754, US-755, US-756, US-757, US-758, US-759, US-760, US-761, US-762, US-763, US-764, US-765, US-766, US-767, US-768, US-769, US-770, US-771, US-772, US-773, US-774, US-775, US-776, US-777, US-778, US-779, US-780, US-781, US-782, US-783, US-784, US-785, US-786, US-787, US-788, US-789, US-790, US-791, US-792, US-793, US-794, US-795, US-796, US-797, US-798, US-799, US-800, US-801, US-802, US-803, US-804, US-805, US-806, US-807, US-808, US-809, US-810, US-811, US-812, US-813, US-814, US-815, US-816, US-817, US-818, US-819, US-820, US-821, US-822, US-823, US-824, US-825, US-826, US-827, US-828, US-829, US-830, US-831, US-832, US-833, US-834, US-835, US-836, US-837, US-838, US-839, US-840, US-841, US-842, US-843, US-844, US-845, US-846, US-847, US-848, US-849, US-850, US-851, US-852, US-853, US-854, US-855, US-856, US-857, US-858, US-859, US-860, US-861, US-862, US-863, US-864, US-865, US-866, US-867, US-868, US-869, US-870, US-871, US-872, US-873, US-874, US-875, US-876, US-877, US-878, US-879, US-880, US-881, US-882, US-883, US-884, US-885, US-886, US-887, US-888, US-889, US-890, US-891, US-892, US-893, US-894, US-895, US-896, US-897, US-898, US-899, US-900, US-901, US-902, US-903, US-904, US-905, US-906, US-907, US-908, US-909, US-910, US-911, US-912, US-913, US-914, US-915, US-916, US-917, US-918, US-919, US-920, US-921, US-922, US-923, US-924, US-925, US-926, US-927, US-928, US-929, US-930, US-931, US-932, US-933, US-934, US-935, US-936, US-937, US-938, US-939, US-940, US-941, US-942, US-9

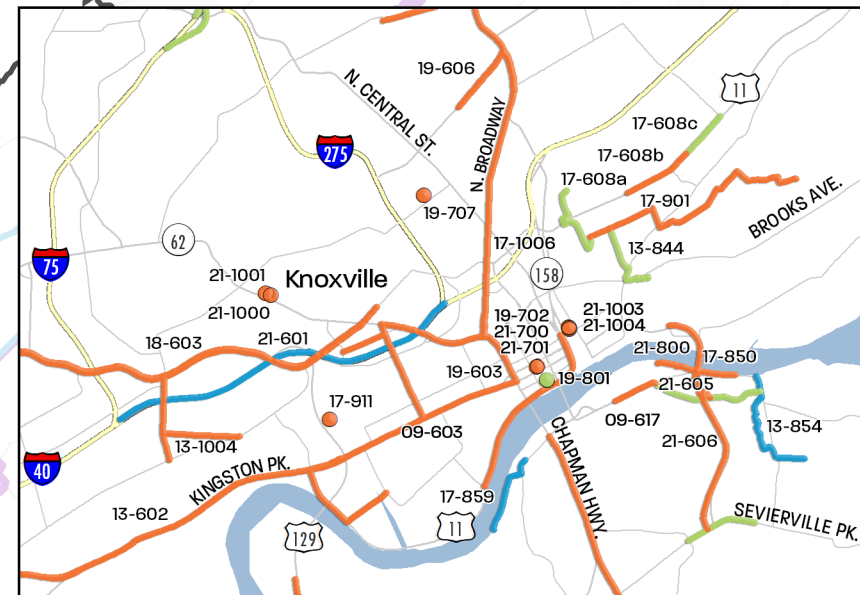


Table G-4. Fiscally Constrained Projects in Knox County

KRMP ID	PROJECT NAME	AGENCY	FACILITY NAME	FROM	TO	LENGTH (MILES)	DESCRIPTION	HORIZON YEAR	HORIZON YEAR COST	PROPOSED FUNDING SOURCE	PM IMPACT
EAST TENNESSEE HUMAN RESOURCE AGENCY (ETHRA)											
21-1002	ETHRA Transit Vehicle Replacement Project	ETHRA	-	-	-	N/A	Purchase of demand response transit vehicles for fleet replacement	2026	\$1,348,650	L-STBG	4
TOWN OF FARRAGUT											
09-629	I-40/I-75/Campbell Station Road Interchange	Farragut	Interchange of I-40/75 at Campbell Station Rd			-	Reconfigure existing interchange to improve capacity, safety and operations.	2030	\$54,546,881	NHPP	1,3
09-630	Virtue Road Reconstruction	Farragut	Virtue Rd	Boyd Station Rd	2200' S of Broadwood Dr	0.95	Reconstruct 2-lane road with addition of turn lanes and bicycle/pedestrian facilities	2026	\$7,716,121	L-STBG	1,2
09-668	Kingston Pike (SR 1) Widening	Farragut	Kingston Pk	Smith Rd	Campbell Station Rd	1.40	Widen from 4 to 6 lanes with addition of bicycle/pedestrian facilities	2040	\$28,812,844	NHPP	1,2,3
09-669	Everett Road Improvements	Farragut	Everett Rd	Watt Rd	Split Rail Lane	2.50	Reconstruct 2-lane road with addition of continuous center turn lane and bicycle/pedestrian facilities	2045	\$41,173,191	L-STBG	1,2
09-691	I-40/75 Widening	Farragut	I-40/75	I-40/75 Interchange	Campbell Station Rd Interchange	5.30	Widen from 6 to 8 lanes	2035	\$54,503,516	NHPP	3
13-601	Union Road /N Hobbs Road Reconstruction	Farragut	Union Rd/N. Hobbs Rd	Everett Rd	Kingston Pike (SR 1)	1.00	Reconstruct 2-lane road with addition of turn lanes and bicycle/pedestrian facilities	2026	\$4,546,000	L-STBG	1,2
13-603	I-40/75 Auxiliary Lanes	Farragut	I-40/75	Campbell Station Rd Interchange	Lovell Rd Interchange	1.40	Construct eastbound and westbound auxiliary lanes between interchanges	2030	\$12,412,500	NHPP	3
13-813	Farragut Advanced Traffic Management System - Ph 1	Farragut				N/A	Advanced Traffic Management Systems (ATMS) are a component of Intelligent Transportation Systems (ITS) that integrate various technologies specifically related to the traffic signal system to improve overall operations. This project includes the Town's entire signal system.	2026	\$7,738,167	CMAQ	3
19-703	Jamestowne Boulevard Study	Farragut	Jamestowne Boulevard	SR 1 (Kingston Pike)	Campbell Station Road	N/A	Feasibility and planning study to determine needed improvements to Jamestowne Boulevard in Farragut to provide additional route for motorists and pedestrians to bypass intersection of Kingston Pike at Campbell Station Road.	2026	\$88,184	L-STBG	-

KRMP ID	PROJECT NAME	AGENCY	FACILITY NAME	FROM	TO	LENGTH (MILES)	DESCRIPTION	HORIZON YEAR	HORIZON YEAR COST	PROPOSED FUNDING SOURCE	PM IMPACT
KNOXVILLE AREA TRANSIT (KAT)											
21-1003	Purchase KAT Vehicles - Fixed Route Buses	KAT	-	-	-	N/A	Purchase of fixed-route buses for fleet replacement or minor expansion	2026	\$25,480,360	L-STBG/CMAQ	4
21-1004	KAT Bus Engine Overhauls	KAT	-	-	-	N/A	Mid-life engine overhauls on 46 transit buses. An engine “overhaul” is a mid-life action on a major component that enables an asset to achieve its useful life and is an FTA-eligible activity under Circular 5010.1E	2026	\$5,248,971	L-STBG	4
KNOX COUNTY											
09-625	Schaad Road Widening	Knox County	Schaad Rd	Oak Ridge Hwy (SR 62)	Pleasant Ridge Rd	1.50	Widen from 2 to 4 lanes with addition of sidewalks	2026	\$12,676,484	Local	1,2,3
09-637	Lovell Road Widening (SR 131)	Knox County	Lovell Rd (SR 131)	Cedardale Ln	Middlebrook Pk	1.70	Widen 2-lane to 4-lane, including pedestrian and bicycle facilities.	2030	\$25,490,954	L-STBG	1,2,3
09-644	Gov John Sevier Highway (SR 168)	Knox County	Gov John Sevier Hwy (SR 168)	Alcoa Hwy (SR 115/US 129)	Chapman Hwy (US 441/SR 71)	6.50	Widen from 3 to 4-lane divided roadway	2035	\$105,690,856	S-STBG	1,2,3
09-645	Northshore Drive (SR 332)	Knox County	Northshore Dr (SR 332)	Morrell Rd	Ebenezer Rd	3.50	Reconstruct 2-lane road with addition of turn lanes and bicycle/pedestrian facilities	2035	\$31,875,020	S-STBG	1,2,3
09-646	Northshore Drive (SR 332)	Knox County	Northshore Dr (SR 332)	Pellissippi Pkwy (SR 162)	Concord Rd (SR 332)	4.50	Reconstruct 2-lane road with addition of turn lanes and bicycle/pedestrian facilities	2040	\$47,359,784	S-STBG	1,2,3
09-647	Pellissippi Parkway (SR 162)	Knox County	Pellissippi Pkwy (SR 162)	Edgemoor Rd (SR 170)	Dutchtown Rd	6.00	Corridor safety and capacity improvements to include access control, interchange reconstruction, frontage roads, additional/auxiliary lanes and provision for a shared use path	2030	\$101,976,781	NHPP	1,2,3
09-651	I-40/I-75/Watt Road Interchange	Knox County	I-40 at Watt Rd Interchange	Interchange at Watt Rd		-	Reconfigure existing interchange to improve capacity, safety and operations.	2026	\$24,250,665	NHPP	1,3
09-673	Oak Ridge Highway (SR 62)	Knox County	Oak Ridge Hwy (SR 62)	Byington Beaver Ridge Rd (SR 131)	Pellissippi Pkwy (SR 162)	4.20	Widen from 2 to 4 lanes	2035	\$62,743,460	NHPP	2,3
10-700	Campbell Station Road Improvements	Knox County	Campbell Station Road	I-40	Hardin Valley Road	3.30	Widening and realignment of Campbell Station Rd from I-40 to Hardin Valley Rd	2030	\$27,487,702	L-STBG	1,2

KRMP ID	PROJECT NAME	AGENCY	FACILITY NAME	FROM	TO	LENGTH (MILES)	DESCRIPTION	HORIZON YEAR	HORIZON YEAR COST	PROPOSED FUNDING SOURCE	PM IMPACT
KNOX COUNTY (CONT.)											
19-604	Knox County Advanced Traffic Management System - Ph 2	Knox County		Various		N/A	Continues implementation of County's Advanced Traffic Management Systems (ATMS) which are a component of Intelligent Transportation Systems (ITS) that integrate various technologies specifically related to the traffic signal system to improve overall operations. This project primarily covers E. Emory Rd, Norris Freeway and Maynardville Pk	2026	\$1,705,263	CMAQ	3
19-707	County-wide Transportation Study (Knox)	Knox County				N/A	Prepare a countywide transportation plan in conjunction with the General Plan update in order to determine priorities for transportation improvements that address existing and proposed land use	2026	\$688,939	L-STBG	-
21-602	Intersection Improvement at Beaver Ridge Road and West Emory Road	Knox County				-	Installation of turn lanes and signalization at Beaver Ridge Rd and W. Emory Rd in Karns	2026	\$1,653,454	HSIP	1
21-604	Tazewell Pike and Fairview Road Intersection Realignment	Knox County				-	Tazewell Pk and Fairview Rd Intersection Realignment (Intersection improvement with turn lanes and traffic signal)	2026	\$1,929,030	HSIP	1
21-801	Gibbs Schools Pedestrian Bridge	Knox County				N/A	Pedestrian Bridge over Tazewell Pk to serve Gibbs Elementary, Middle, and High Schools	2026	\$2,755,757	MMAG	1
KNOX COUNTY CAC TRANSIT											
21-1000	Knox County CAC Transit Capital Project	Knox County CAC	-	-	-	N/A	Purchase of demand response transit vehicles for fleet replacement	2026	\$2,372,188	L-STBG	4
21-1001	Knoxville-Knox County CAC Transit Volunteer Assisted Transportation	Knox County CAC	-	-	-	N/A	Purchase of vehicles for assisted demand response transit services	2026	\$468,479	L-STBG	4
CITY OF KNOXVILLE											
09-615	Washington Pike	Knoxville	Washington Pk	I-640	Murphy Rd	1.70	Widen from 2-lanes to 4-lanes including pedestrian and bicycle facilities.	2026	\$19,422,578	L-STBG	1,2,3
09-616	Pleasant Ridge Road	Knoxville	Pleasant Ridge Rd	Merchant Dr	Knoxville City Limits (Country Brook Dr)	1.60	Reconstruct 2-lane road with addition of turn lanes and bicycle/pedestrian facilities	2026	\$4,450,000	L-STBG	1,2



KRMP ID	PROJECT NAME	AGENCY	FACILITY NAME	FROM	TO	LENGTH (MILES)	DESCRIPTION	HORIZON YEAR	HORIZON YEAR COST	PROPOSED FUNDING SOURCE	PM IMPACT
CITY OF KNOXVILLE (CONT.)											
09-617	Sevier Avenue - South Knoxville Waterfront Roadway Improvements	Knoxville	Sevier Ave	Davenport Rd	Island Home Ave	0.30	Construct roadway streetscape improvements and utility relocations along Sevier Ave and new roundabout at the intersection of Foggy Bottom/Sevier Ave/Island Home Ave.	2026	\$8,866,908	L-STBG/S-STBG	1,2
09-626	Chapman Hwy (SR 71/US 441) Operational and Safety Improvements	TDOT	Chapman Hwy	SR 338 (Boyds Creek Hwy	Blount Ave	10.30	Corridor safety and operational improvements, including intersection improvements and/or driveway improvements and/or left turn lanes at various locations throughout the project area	2035	\$77,018,589	IA	1
09-626D	Chapman Highway (US 441/SR 71)	TDOT	Chapman Hwy	Hendron Chapel Rd	Simpson Rd	0.90	Add center turn lane	2026	\$9,920,726	HSIP	1
09-638	Oak Ridge Highway (SR 62)	TDOT	Oak Ridge Hwy (SR 62)	Schaad Rd	Byington Beaver Ridge Rd	4.20	Widen from 2 to 4 lanes	2035	\$78,238,685	IA	2,3
09-643	Emory Road (SR 131)	TDOT	Emory Rd (SR 131)	Maynardville Hwy (SR 33)	Tazewell Pk (SR 331)	4.80	Widen from 2 to 4 lanes with median and/or center turn lane, including bike and pedestrian facilities.	2030	\$91,539,234	IA	2,3
09-649	Pellissippi Parkway (SR 162)/Oak Ridge Highway Interchange	TDOT	Pellissippi Pkwy (SR 162)/Oak Ridge Hwy Interchange	Interchange at Oak Ridge Hwy (SR 62)		0.45	Reconstruct interchange to a Single Point Urban Interchange and provide connection to Solway Rd	2026	\$36,916,125	IA	1,3
09-652	I-75 at Emory Road (SR 131) Interchange	TDOT	I-75 at Emory Rd (SR 131) Interchange			-	Reconfigure existing interchange to a Diverging Diamond Interchange to improve capacity, safety and operations.	2026	\$12,779,000	NHPP/ L-STBG/LOCAL	1,3
09-653	Alcoa Highway (SR 115/US 129) Widening	TDOT	Alcoa Hwy (SR 115/US 129)	Woodson Dr	Cherokee Trail Interchange	1.60	Widen 4-lane to 6-lane including pedestrian and bicycle facilities.	2026	\$102,000,000	NHPP	1,2,3
09-654	I-75/I-640/I-275 Interchange	TDOT	I-75/I-640/I-275 Interchange	Interchange at I-640/I-275 (Sharps Gap).		0.57	Interchange reconstruction along with the addition of auxiliary lanes in each direction on I-75.	2035	\$134,210,611	IA	2,3
09-658	Northshore Drive at Kingston Pike Intersection Improvements	TDOT	Northshore Dr at Kingston Pk	Intersection		0.50	Intersection improvements including additional turn lanes and sidewalk extensions. Replace bridge over Fourth Creek on Kingston Pike.	2030	\$29,463,705	IA	1,3
09-689	Papermill Drive Complete Street	Knoxville	Papermill Dr	Weisgarber Rd	Kingston Pike (SR 1)	0.60	Reconstruct 2-lane road with addition of turn lanes and bicycle/pedestrian facilities	2030	\$13,225,215	L-STBG	1,2
09-692	I-75 Widening	TDOT	I-75	Emory Rd (SR 131)	Raccoon Valley Rd (SR 170)	4.85	Widen from 4 to 6 lanes	2035	\$183,319,493	IA	3

KRMP ID	PROJECT NAME	AGENCY	FACILITY NAME	FROM	TO	LENGTH (MILES)	DESCRIPTION	HORIZON YEAR	HORIZON YEAR COST	PROPOSED FUNDING SOURCE	PM IMPACT
CITY OF KNOXVILLE (CONT.)											
13-1003	Chapman Highway Advanced Traffic Management System	Knoxville		Mountain Grove Dr	Blount Ave	6.30	Advanced Traffic Management Systems (ATMS) are a component of Intelligent Transportation Systems (ITS) that integrate various technologies specifically related to the traffic signal system to improve overall operations	2026	\$3,504,221	CMAQ	3
13-1004	Liberty Street Multimodal Project	Knoxville		Middlebrook Pk (SR 169)	Sutherland Ave	1.10	Addition of sidewalks and bicycle facilities along Liberty and Division Streets.	2026	\$1,555,500	L-STBG	1
13-602	Knoxville Advanced Traffic Management System - Ph 1	Knoxville		Various		19.50	Advanced Traffic Management Systems (ATMS) are a component of Intelligent Transportation Systems (ITS) that integrate various technologies specifically related to the traffic signal system to improve overall operations. This project covers two primary corridors of Broadway and Kingston Pk	2026	\$5,350,000	L-STBG	3
13-838	First Creek Greenway - Broadway Streetscape	Knoxville		Woodland Ave	Cecil Ave	0.30	Construct a new shared use path extending First Creek Greenway from near Cecil Ave to near Woodland Ave	2026	\$1,804,148	L-STBG	1
13-844	First Creek Greenway - Downtown East	Knoxville		Caswell Park	Morningside Park	1.40	Construct a new shared use path along First Creek connecting Caswell Greenway to Morningside Greenway	2030	\$2,567,248	L-STBG-TA	1
13-854	Baker Creek Greenway	Knoxville		Maynard Glenn Park	Island Home Ave	1.00	Construct a new shared use path along Baker Creek, connecting Maynard Glenn Park, Mary James Park, to the proposed South Waterfront Greenway	2040	\$2,959,987	L-STBG-TA	1
13-855	First Creek Greenway - North Knox	Knoxville		Edgewood Park	Mineral Springs Ave	1.30	Construct a new shared use path along First Creek connecting Edgewood Park to the proposed First Creek Greenway - Old Broadway segment at Mineral Springs Avenue	2035	\$4,194,082	L-STBG-TA	1
13-858	Knoxville Northwest Greenway Connector - Ph 2	Knoxville		Middlebrook Pk. at Third Creek Rd.	SR 62 Western Ave. pedestrian bridge	1.70	New trail connecting from Middlebrook Pk. At Third Creek Rd. to SR 62 Western Ave. pedestrian bridge. ADA upgrades and pedestrian lighting.	2026	\$2,569,950	S-STBG-TA	1
13-880	Atlantic Avenue Sidewalk	Knoxville		Pershing St	Broadway	0.60	Construct 3,000 linear feet of sidewalks on Atlantic Ave between Pershing St and Broadway	2026	\$1,333,787	L-STBG	1
13-884	Chapman Highway Multiuse Path	Knoxville		Young High Pk	Stone Rd	0.80	Construct a new shared use path along Chapman Highway from Young High Pike to Stone Road	2026	\$2,667,573	State	1

KRMP ID	PROJECT NAME	AGENCY	FACILITY NAME	FROM	TO	LENGTH (MILES)	DESCRIPTION	HORIZON YEAR	HORIZON YEAR COST	PROPOSED FUNDING SOURCE	PM IMPACT
CITY OF KNOXVILLE (CONT.)											
17-1006	KAT Express Transit Service Enhancement - Broadway Transit Signal Priority Implementation	Knoxville		Knoxville Station	N. Broadway at Colonial Circle	6.50	The project will consist of six BRT bus stops (one for each direction totaling 12 stations), Passenger Information Systems (PIS) at each station, TSP software integrated into the City’s ATMS central software, and a number of queue jump locations, which will be determined during preliminary design efforts.	2026	\$12,125,332	CMAQ	3
17-608A	Magnolia Avenue Streetscape - Ph 3	Knoxville	Magnolia Ave	N. Bertrand St	N. Kyle St	0.20	Construct streetscape improvements in the existing right of way that include raised medians replacing center left-turn lane, signal improvements, bike lanes, improved sidewalks, bus pull-offs, and amenities	2026	\$5,511,515	L-STBG	1
17-608B	Magnolia Avenue Streetscape - Ph 4	Knoxville	Magnolia Ave	N. Kyle St	Spruce St	0.30	Construct streetscape improvements in the existing right of way that include raised medians replacing center left-turn lane, signal improvements, bike lanes, improved sidewalks, bus pull-offs, and amenities	2026	\$7,164,969	L-STBG	1
17-608C	Magnolia Avenue Streetscape - Ph 5	Knoxville	Magnolia Ave	Spruce St	N. Cherry St	0.40	Construct streetscape improvements in the existing right of way that include raised medians replacing center left-turn lane, signal improvements, bike lanes, improved sidewalks, bus pull-offs, and amenities	2030	\$12,187,943	L-STBG	1
17-801	Knoxville Advanced Traffic Management System - Ph 2	Knoxville	Various			N/A	Additional upgrades of the City traffic signal system following Phase 1.	2030	\$9,983,741	CMAQ	3
17-850	South Waterfront Greenway - East of Suttree	Knoxville		Suttree Landing Park	Island Home Ave Riverwalk	0.60	Construct riverwalk trail connecting the 0.10-mile section of cantilevered riverwalk along Island Home Avenue to Suttree Landing Park riverwalk that is just east of Foggy Bottom Street along the Tennessee River.	2026	\$7,617,311	L-STBG	1
17-859	South Waterfront Greenway -West of Cityview	Knoxville		City View Public Greenway	Scottish Pk Park	1.90	A riverwalk connector from the existing CityView Public Riverwalk to Scottish Pike Park	2040	\$11,481,160	L-STBG-TA	1
17-901	East Knox Greenway – Ph 1	Knoxville		Willow Ave	Knoxville Botanical Gardens	1.60	Construct a new shared use path connecting First Creek Greenway to Knoxville Botanical Gardens and Arboretum	2026	\$1,806,825	L-STBG	1



KRMP ID	PROJECT NAME	AGENCY	FACILITY NAME	FROM	TO	LENGTH (MILES)	DESCRIPTION	HORIZON YEAR	HORIZON YEAR COST	PROPOSED FUNDING SOURCE	PM IMPACT
CITY OF KNOXVILLE (CONT.)											
17-910	Tazewell Pike Sidewalk	Knoxville		Old Broadway	Jacksboro Pk	0.60	Construct sidewalk along Tazewell Pike from Old Broadway to Jacksboro Pike	2035	\$1,521,308	L-STBG-TA	1
17-911	Tyson Fort Sanders Bike Connection	Knoxville		Fort Sanders Neighborhood	Tyson Park	0.50	Construct new shared use path between Fort Sanders Neighborhood and Tyson Park	2026	\$6,062,666	L-STBG-TA	1
18-200B	Alcoa Highway (SR 115/US 129) ITS Expansion - Ph 2	TDOT		Topside Rd	Cherokee Trail Interchange	5.55	ITS Smartway Geographic Expansion	2030	\$2,531,591	NHPP	3
18-201	I-140 ITS Expansion	TDOT		Near MM 2	Near MM 11 (SR 115/US 129/Alcoa Hwy)	9.20	I-140 ITS Expansion to include the installation of a power and communication network and ITS Devices such as CCTV cameras, DMS, and RDS	2026	\$5,180,824	NHPP	3
18-600	I-75 ITS Expansion	TDOT		MM 109.6	SR 61 (Exit 122)	13.03	ITS expansion includes the deployment of CCTV cameras at critical interchanges. Install power and communications infrastructure and at Least 2 CCTV Cameras at each Interchange.	2026	\$3,968,291	NHPP	3
18-603	Middlebrook Pike (SR 169) ATMS Expansion	Knoxville		College St	Joe Hinton Rd	6.50	Advanced Traffic Management Systems (ATMS) are a component of Intelligent Transportation Systems (ITS) that integrate various technologies specifically related to the traffic signal system to improve overall operations.	2026	\$2,678,596	CMAQ	3
19-603	Traffic Signal Improvements for the U.T. Area	Knoxville		Various		N/A	Includes Advanced Traffic Management Systems (ATMS) which are a component of Intelligent Transportation Systems (ITS) that integrate various technologies specifically related to the traffic signal system to improve overall operations. Project covers several roadways in and around UT campus	2026	\$3,270,533	CMAQ	3
19-606	Woodland Avenue Complete Street	Knoxville		N. Broadway	Glenwood Ave	0.50	Install bike lanes, sidewalks, and pedestrian crossing improvements. Project connects a greenway to existing bike lanes.	2026	\$2,755,757	L-STBG	1
21-600	Magnolia Avenue/Rutledge Pike/Asheville Highway Interchange Improvements	Knoxville				-	Construct interchange improvements to consist of intersection improvements, bike lanes and enhanced sidewalks	2030	\$15,818,395	L-STBG	1
21-601	I-40 Westbound Interchange at I-275	TDOT		I-275	Near I-640	2.00	Interchange access improvements and extension of two existing lanes from US129 entrance ramp to WB mainline such that one lane continues through on I-40 mainline	2040	\$101,895,293	IA	3

KRMP ID	PROJECT NAME	AGENCY	FACILITY NAME	FROM	TO	LENGTH (MILES)	DESCRIPTION	HORIZON YEAR	HORIZON YEAR COST	PROPOSED FUNDING SOURCE	PM IMPACT
CITY OF KNOXVILLE (CONT.)											
21-605	James White Parkway Corridor Improvements	Knoxville				1.20	Address vehicular, pedestrian, and cyclist needs in local roadway network adjacent to James White Pkwy. Includes: Hillwood Ave from Anita Dr to Island Home Ave, Anita Dr from Sevier Ave to Hillwood Ave and Sevierville Pk from Woodlawn Pk to Sevier Ave	2030	\$6,482,949	L-STBG	1
21-606	James White Parkway Roadway Improvements	Knoxville		Sevierville Pk	Bridge over TN River	1.20	This project will relocate the two northbound travel lanes to share the existing pavement for the southbound lanes while maintaining 2 travel lanes in each direction. This will allow the current northbound travel lanes and adjacent excess land to be repurposed to a linear park.	2026	\$11,023,029	L-STBG	1
21-800	South Knoxville Bridge Greenway	Knoxville		Anita Dr	Morningside Greenway at Riverside Dr	0.60	Construct multi-modal path along James White Pkwy	2026	\$2,645,527	L-STBG-TA	1
21-802	Adair to Old Broadway Connection	Knoxville		Old Broadway	N Broadway	0.20	Construct new multiuse path to connect existing path on Old Broadway to north of Adair Drive	2030	\$3,110,368	L-STBG-TA	1

**Figure G-4. Fiscally Constrained Projects in Loudon County**

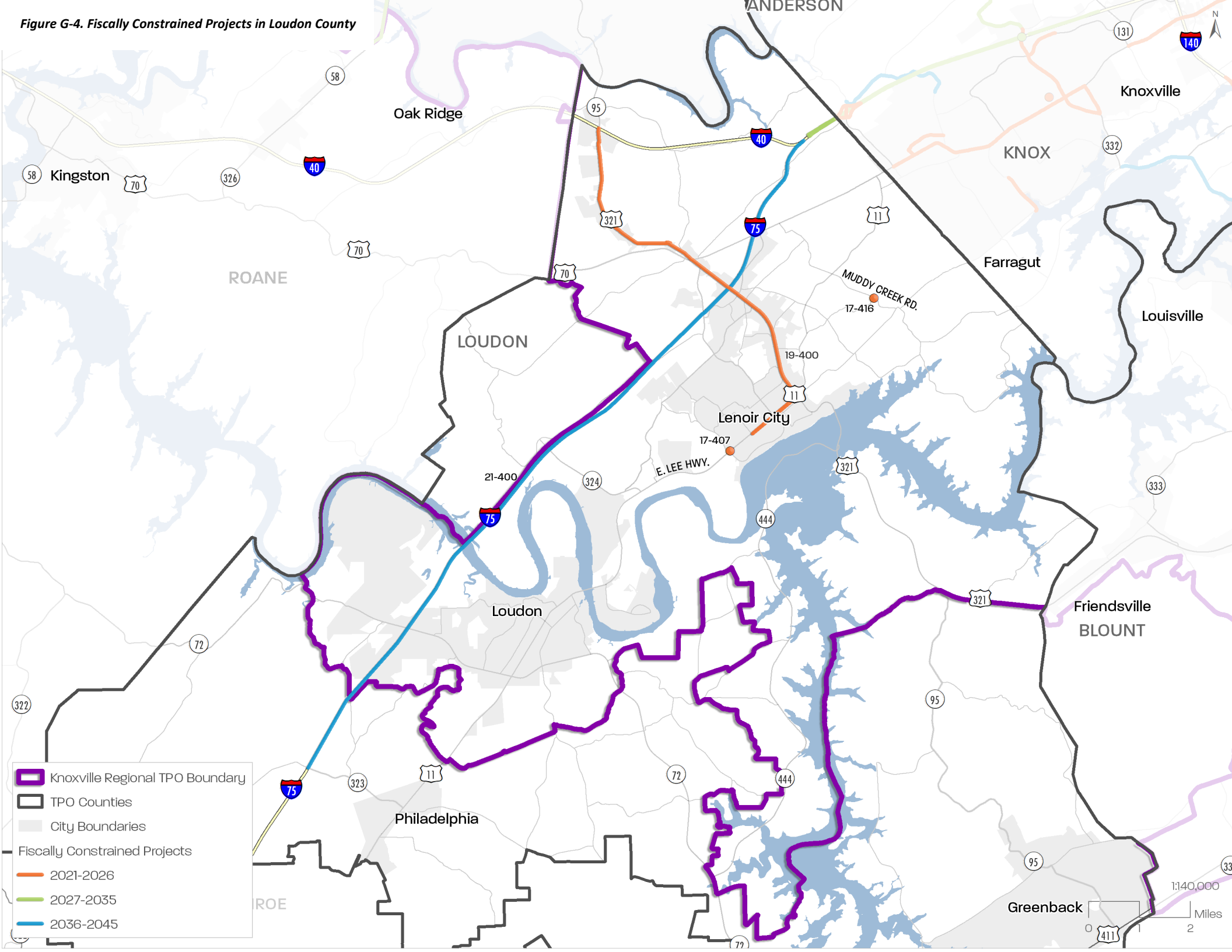


Table G-5. Fiscally Constrained Projects in Loudon County

KRMP ID	PROJECT NAME	AGENCY	FACILITY NAME	FROM	TO	LENGTH (MILES)	DESCRIPTION	HORIZON YEAR	HORIZON YEAR COST	PROPOSED FUNDING SOURCE	PM IMPACT
CITY OF LENOIR CITY											
17-407	US 11 at Industrial Park Drive Intersection Improvement	Lenoir City	US 11 at Industrial Park Dr	Intersection of US 11 at Industrial Park Dr		0.20	Intersection improvements including turn lanes and new traffic signal	2026	\$909,400	HSIP	1
19-400	Lenoir City CMAQ ITS Phase 2	Lenoir City		Various		8.6	Continues implementation of Advanced Traffic Management Systems (ATMS) which are a component of Intelligent Transportation Systems (ITS) that integrate various technologies specifically related to the traffic signal system to improve overall operations. This project primarily covers major corridors of US 321 and US 11	2026	\$2,546,761	CMAQ	3
LOUDON COUNTY											
17-416	Muddy Creek Road Intersection Realignment	Loudon County	Muddy Creek Rd at Virtue Rd	Intersection		0.10	Realign intersection and add turn lanes	2026	\$529,877	HSIP	1
21-400	I-75 Widening	TDOT	I-75	Pond Creek Rd (SR 323)	I-40/I-75 Junction	16.10	Widen from 4 to 6 lanes	2040	\$361,119,430	IA	3

Figure G-5. Fiscally Constrained Projects in Roane County

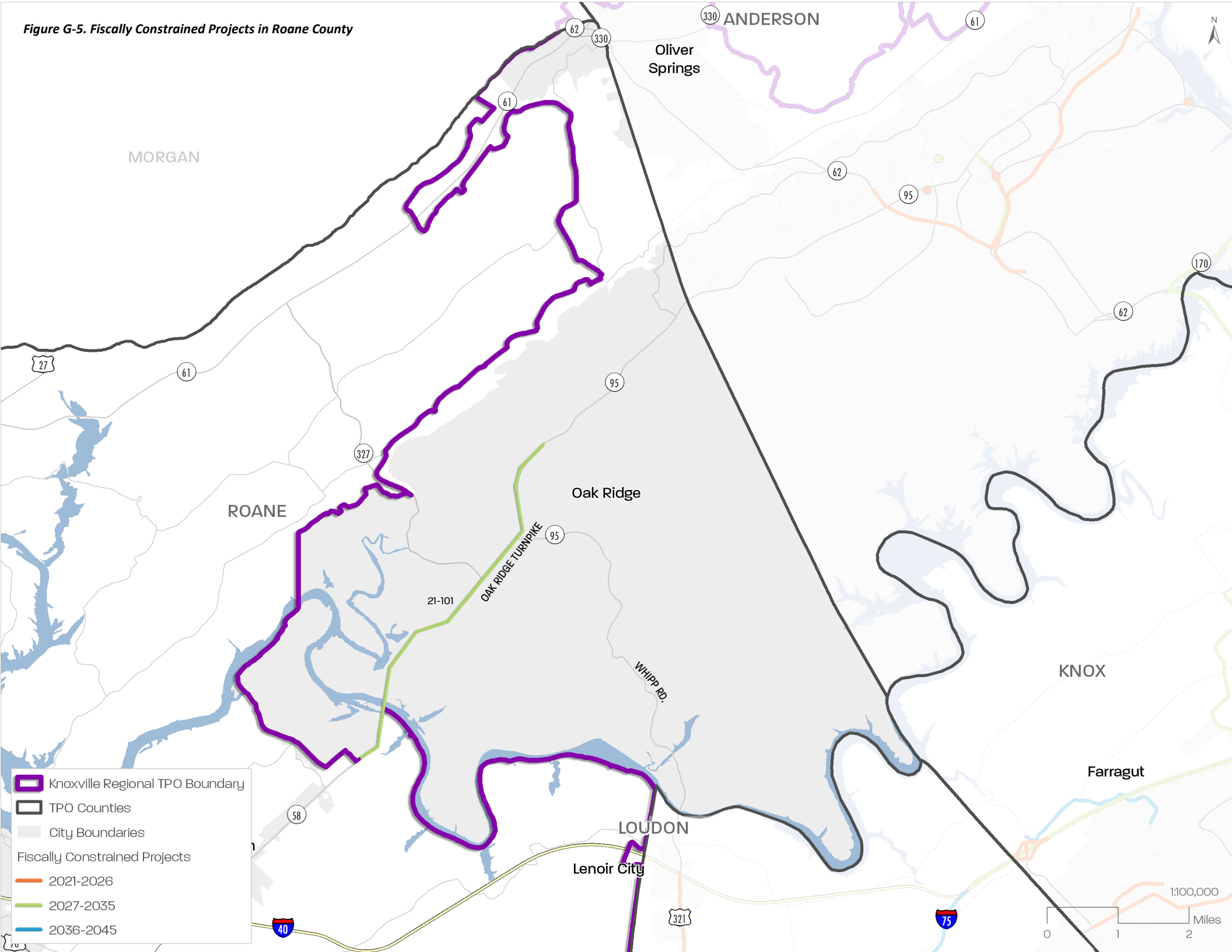


Table G-6. Fiscally Constrained Projects in Roane County

KRMP ID	PROJECT NAME	AGENCY	FACILITY NAME	FROM	TO	LENGTH (MILES)	DESCRIPTION	HORIZON YEAR	HORIZON YEAR COST	PROPOSED FUNDING SOURCE	PM IMPACT
CITY OF OAK RIDGE											
21-101	West End Corridor Intersection Improvements	Oak Ridge	Oak Ridge Turnpike (SR 95)	Renovare Boulevard	Broadberry Avenue at Gallaher Road (SR 58)	N/A	Intersection improvements along Oak Ridge Turnpike (SR 95/SR 58) at Renovare Blvd, Novus Dr, Heritage Center Blvd, and Broadberry Ave at Gallaher Rd)	2030	\$2,593,179	L-STBG	1

Figure G-6. Fiscally Constrained Projects in Sevier County

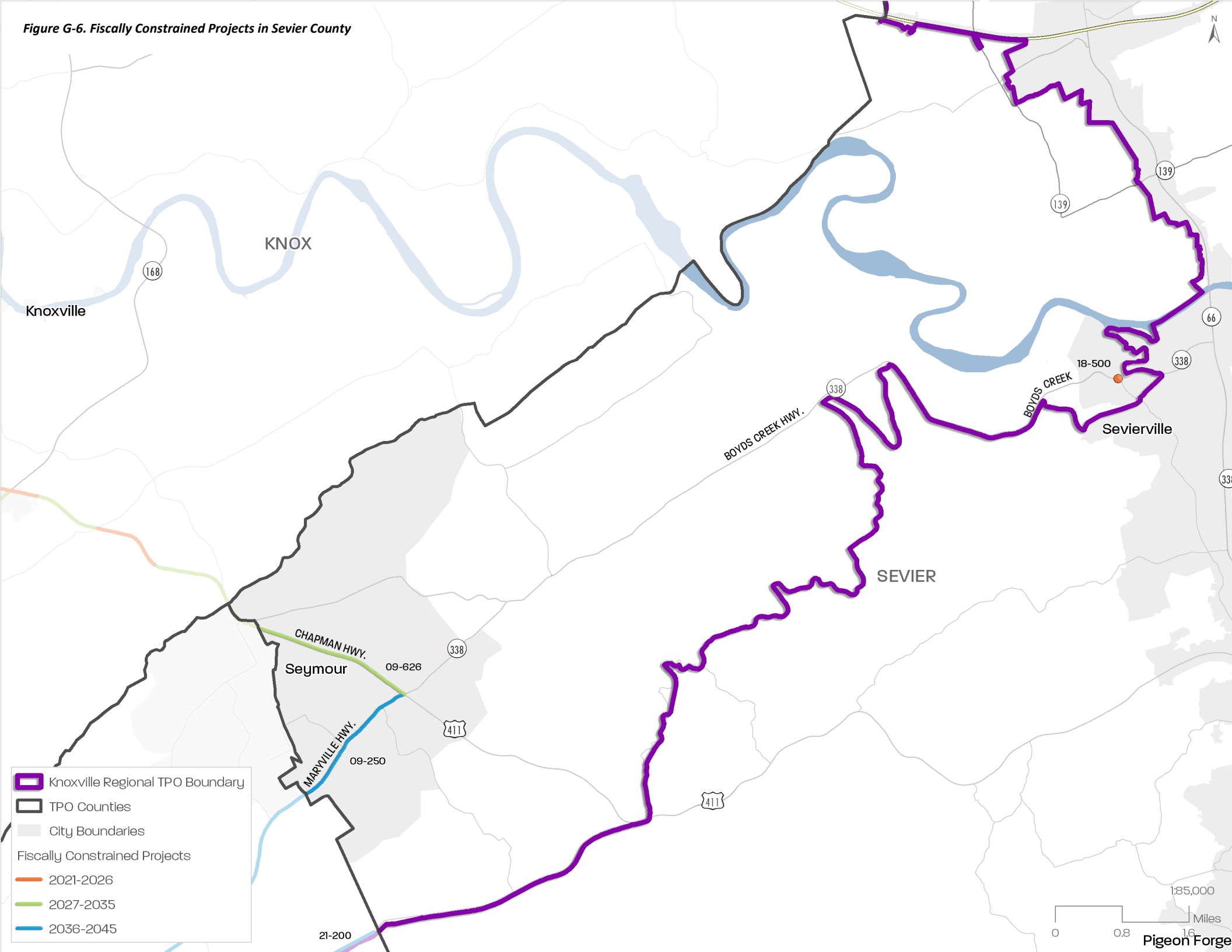


Table G-7. Fiscally Constrained Projects in Sevier County

KRMP ID	PROJECT NAME	AGENCY	FACILITY NAME	FROM	TO	LENGTH (MILES)	DESCRIPTION	HORIZON YEAR	HORIZON YEAR COST	PROPOSED FUNDING SOURCE	PM IMPACT
CITY OF SEVIERVILLE											
18-500	Boyds Creek Highway (SR 338) at Old Knoxville Highway Intersection Improvements	Sevierville	Boyds Creek Highway (SR 338)	at Old Knoxville Highway Intersection		-	Reconfigure existing intersection to improve safety and operations through geometric layout changes, addition of turn lanes, and installation of a new traffic signal.	2026	\$1,207,022	L-STBG	1

Table G-8. Fiscally Constrained Programs in TPO Planning Region

KRMP ID	PROJECT NAME	AGENCY	FACILITY NAME	FROM	TO	LENGTH (MILES)	DESCRIPTION	HORIZON YEAR	HORIZON YEAR COST	PROPOSED FUNDING SOURCE	PM RULING
21-700	Smart Trips	TPO	--	--	--	--	Smart Trips Comprehensive and Ridesharing Program	2026	\$1,194,070	CMAQ	3
21-701	Bike Parking	TPO	--	--	--	--	Provide convenient and secure bike parking destinations by reducing cost for businesses and agencies to provide bike parking for employees and customers	2026	\$22,046	CMAQ	3
21-702	Resurfacing Program	Regional	--	--	--	--	Projects for preservation, rehabilitation, resurfacing and restoration of federal aid roadways	2026	\$2,204,606	L-STBG	2
21-702	Resurfacing Program	Regional	--	--	--	--	Projects for preservation, rehabilitation, resurfacing and restoration of federal aid roadways	2035	\$3,050,241	L-STBG	2
21-702	Resurfacing Program	Regional	--	--	--	--	Projects for preservation, rehabilitation, resurfacing and restoration of federal aid roadways	2045	\$4,220,242	L-STBG	2
21-703	Safety Improvements Program	Regional	--	--	--	--	Projects that correct or improve a hazardous road location or feature or address a highway safety problem.	2026	\$2,204,606	L-STBG	1
21-703	Safety Improvements Program	Regional	--	--	--	--	Projects that correct or improve a hazardous road location or feature or address a highway safety problem.	2035	\$3,050,241	L-STBG	1
21-703	Safety Improvements Program	Regional	--	--	--	--	Projects that correct or improve a hazardous road location or feature or address a highway safety problem.	2045	\$4,220,242	L-STBG	1
21-704	NHS Preservation/Operations	TDOT	--	--	--	--	Projects for preservation, rehabilitation, resurfacing and restoration of federal aid roadways	2026	\$155,414,214	NHPP	2
21-704	NHS Preservation/Operations	TDOT	--	--	--	--	Projects for preservation, rehabilitation, resurfacing and restoration of federal aid roadways	2035	\$297,983,280	NHPP	2
21-704	NHS Preservation/Operations	TDOT	--	--	--	--	Projects for preservation, rehabilitation, resurfacing and restoration of federal aid roadways	2045	\$451,091,132	NHPP	2
21-705	Safety Improvements Program	TDOT	--	--	--	--	Projects that correct or improve a hazardous road location or feature or address a highway safety problem.	2026	\$54,775,624	HSIP	1
21-705	Safety Improvements Program	TDOT	--	--	--	--	Projects that correct or improve a hazardous road location or feature or address a highway safety problem.	2035	\$120,064,859	HSIP	1
21-705	Safety Improvements Program	TDOT	--	--	--	--	Projects that correct or improve a hazardous road location or feature or address a highway safety problem.	2045	\$181,755,813	HSIP	1



Figure G-7. Illustrative Projects in TPO Planning Area

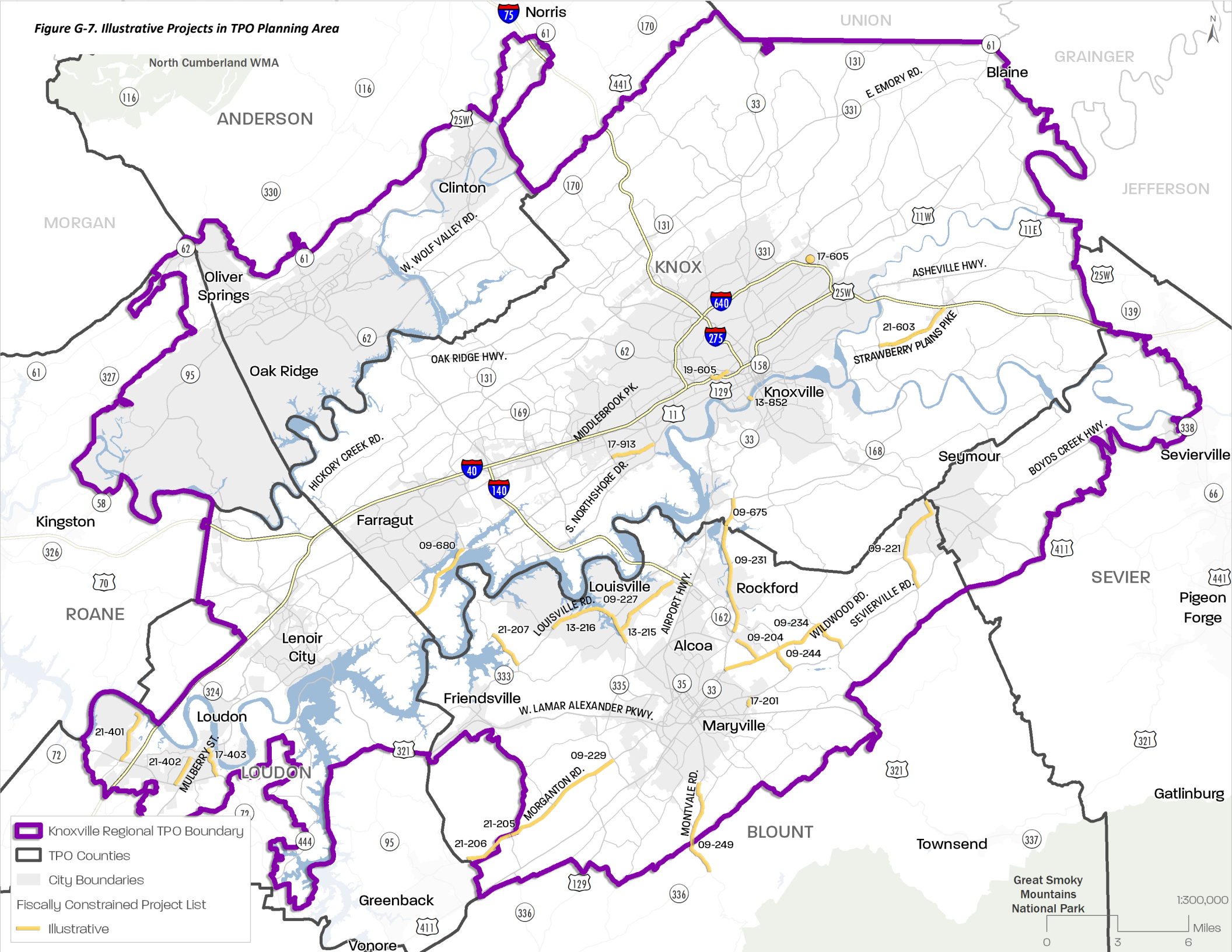


Table G-9. Illustrative Projects in the TPO Planning Area

KRMP ID	PROJECT NAME	AGENCY	FACILITY NAME	FROM	TO	LENGTH (MILES)	DESCRIPTION
09-204	Pellissippi Place Access Road Extension	Alcoa	Pellissippi Place	Wildwood Rd	Pellissippi Place Existing Terminus	1.20	Construct new 2-lane road with center turn lane or median and bicycle/pedestrian facilities
09-221	Burnett Station Road Reconstruction	Blount County	Burnett Station Road	Sevierville Road/SR 35/US 411	Chapman Highway/SR 71/US 441	4.40	Reconstruction of 2-lane road with addition of turn lanes
09-227	Mentor Road Reconstruction	Blount County	Mentor Road	Louisville Road/SR 334	Wrights Ferry Road	3.20	Reconstruct 2-lane roadway with addition of turn lanes
09-229	Morganton Road Reconstruction - Ph 2	Blount County	Morganton Rd	Walker Rd	William Blount Drive (SR 335)	3.30	Reconstruct 2-lane roadway with addition of turn lanes
09-231	Old Knoxville Highway (SR 33) Reconstruction - Rockford	Blount County	Old Knoxville Hwy (SR 33)	Pellissippi Pkwy (SR 162)	Knox County Line	4.60	Reconstruct 2-lane road with addition of turn lanes
09-234	Wildwood Road Reconstruction	Blount County	Wildwood Road	Maryville City Limits	Sevierville Rd	6.10	Reconstruct 2-lane road with addition of turn lanes
09-244	Peppermint Road Reconstruction	Blount County	Peppermint Road	Wildwood Road	Sevierville Road	1.10	Reconstruct 2-lane road with addition of turn lanes
09-249	Montvale Road (SR 336) Reconstruction	Blount County	Montvale Road (SR 336)	Six Mile Rd	Maryville City Limits	4.40	Reconstruct 2-lane road with addition of turn lanes
13-215	Louisville Road (SR 333/SR 334) Reconstruction - Ph 1	Blount County	Louisville Rd (SR 333)	Alcoa City Limts	Lackey Creek Bridge	1.90	Reconstruct 2-lane road with addition of turn lanes
13-216	Louisville Road (SR 333) Reconstruction - Ph 2	Blount County	Louisville Rd (SR 333)	Lackey Creek Bridge	Old Lowes Ferry Rd	2.30	Reconstruct 2-lane road with addition of turn lanes
21-205	Morganton Road Ph 3	Blount County	Morganton Rd	Walker Road	Henry Lane	2.30	Reconstruct 2-lane roadway with addition of turn lanes
21-206	Morganton Road Ph 4	Blount County	Morganton Rd	Henry Lane	Loudon County Line	2.40	Reconstruct 2-lane roadway with addition of turn lanes
21-207	Ralph Phelps Road	Blount County	Ralph Phelps Road	Lowes Ferry	Louisville Road	1.80	Reconstruct 2-lane road with addition of turn lanes
17-201	Amerine Road Improvements	Maryville	Amerine Rd	Fielding Drive	Sevierville Rd	0.50	Reconstruct 2-lane road with addition of turn lanes and sidewalk
09-675	Maryville Pike (SR 33)	Knox County	Maryville Pk (SR 33)	Gov John Sevier Hwy (SR 168)	Blount County Line	1.20	Reconstruct 2-lane road with addition of turn lanes
09-680	Northshore Drive Improvements	Knox County	Northshore Drive	Concord	Harvey Road	3.60	Northshore Dr (SR 332) Improvements (Provide better connectivity from Town of Farragut to the residents)
21-603	Strawberry Plains Pike Improvements	Knox County	Strawberry Plains Pike	I-40	Gov. John Sevier Highway	3.40	Widening of Strawberry Plains Pk from Governor John Sevier Hwy to I-40)
13-852	Knoxville South Waterfront Pedestrian/Bicycle Bridge	Knoxville	South Waterfront Pedestrian Bridge	Clancy Ave	UT	0.30	Construct a new pedestrian/bicycle bridge over the Tennessee River connecting the South Knoxville Waterfront redevelopment area to the University of Tennessee
17-605	Knoxville Center Mall Circulation Study	Knoxville				N/A	Conduct a planning study of the Knoxville Center, I-640 Interchange, frontage roads, and nearby arterial and collectors including a feasibility study to add a new exit from I-640)
17-913	Westland Drive Bike Lane	Knoxville		Morrell Rd	Northshore Dr (SR 332)	1.90	Construct bicycle lanes and sidewalks along both sides of roadway

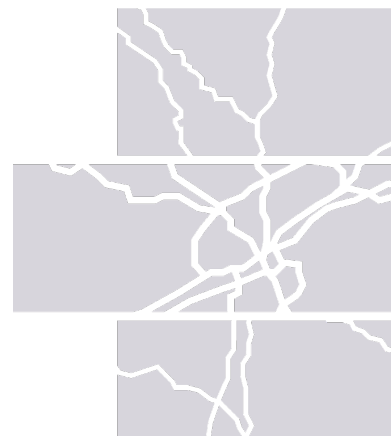
KRMP ID	PROJECT NAME	AGENCY	FACILITY NAME	FROM	TO	LENGTH (MILES)	DESCRIPTION
19-605	Middlebrook Pike Complete Street	Knoxville		Western Ave	Proctor St	0.85	Install protected bicycle facilities, improve sidewalks and upgrade bike/pedestrian treatments at three intersections. Project connects existing bike/ped facilities on University Avenue to the greenway on Middlebrook Pike at Proctor Street.
17-403	Grove Street Resurfacing	City of Loudon	Grove St	US 11	SR 72	1.30	Resurface roadway and add left turn lane on Hwy 72
21-401	Corporate Park Drive Resurfacing	City of Loudon	Corporate Park Drive	State Route 72	Cul de sac Corporate Park Drive	2.40	Resurfacing project
21-402	Maremont Parkway Resurfacing	City of Loudon	Maremont Parkway	State Route 72	Highland Avenue	1.40	Resurfacing (Roadway milling and installing new pavement for the entire street)



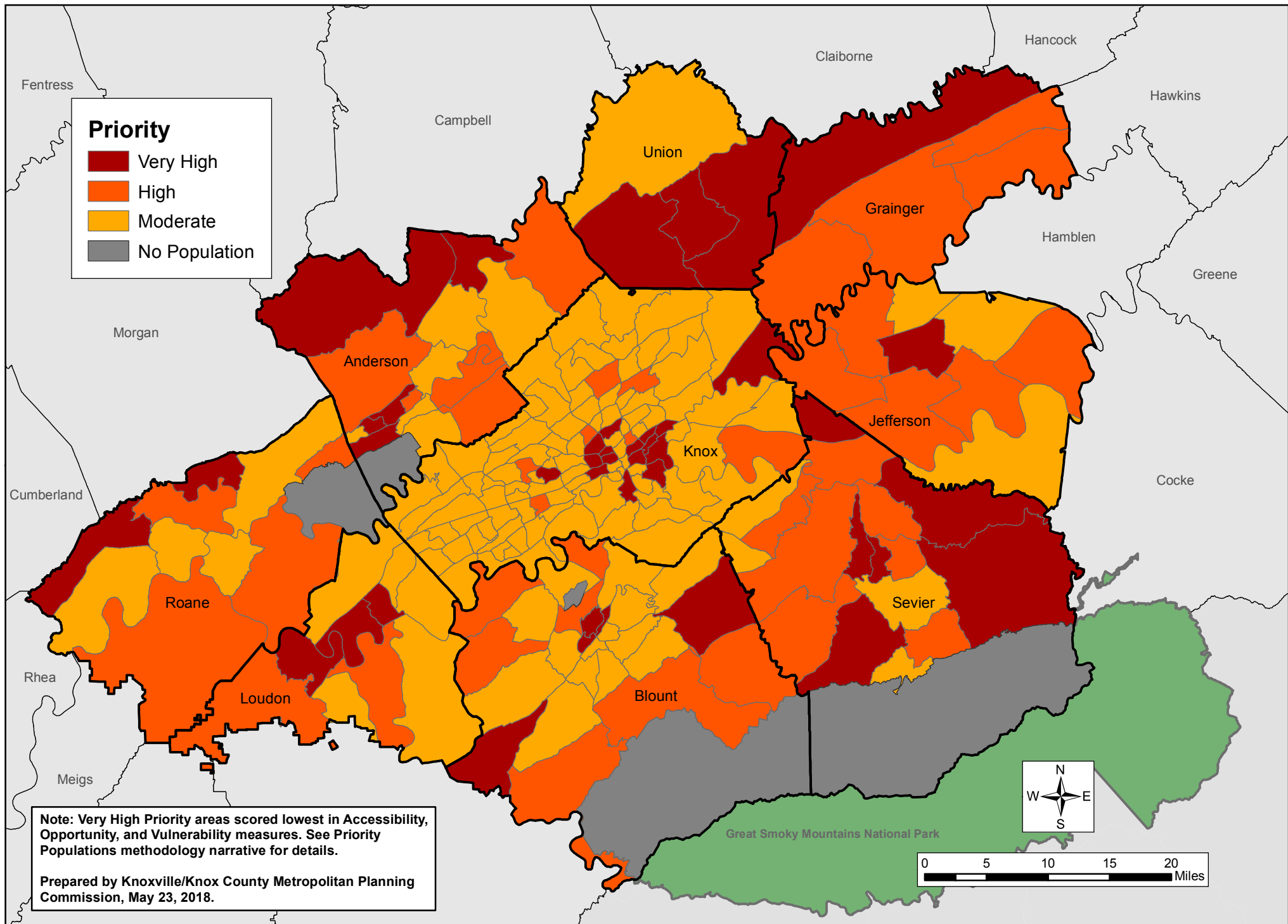
# FY 2023-2026

## Transportation Improvement Program

### Priority Populations Map



# Priority Populations: Knoxville Region, 2018





# FY 2023-2026

## Transportation Improvement Program

### Preferred Growth Concept Map



Map 2: Preferred Growth Concept

## Legend

